

**November 12, 2004
University of California
Haas Pavilion
Berkeley, CA**

**Regional Rounds – Game 4
Saint Mary's vs. California**

**The Coaches vs. Cancer Classic is
Produced by the Gazelle Group**

Official Basketball Box Score -- GAME TOTALS -- FINAL STATISTICS

St. Mary's College vs California
 1-12-04 7:45pm at Haas Pavilion, Berkeley, California

VISITORS: St. Mary's College 2-(

# Player Name	TOT-FG FG-FGA	3-PT FG-FGA	FT-FTA	REBOUNDS			PF	TP	A	TO	BLK	S	MIN
				OF	DE	TOT							
3 Collins, Brett..... f	5-11	0-4	5-5	1	2	3	4	15	2	2	0	1	29
2 Sanders, Jonathan... f	7-13	0-1	3-4	3	5	8	2	17	0	4	1	0	38
4 Kickert, Daniel..... c	3-5	0-1	2-3	1	6	7	4	8	2	1	2	0	26
2 Rowland, E.J..... g	3-7	1-2	10-12	1	11	12	3	17	1	3	0	1	36
1 Walberg, Jason..... g	0-3	0-3	2-2	2	1	3	0	2	0	2	0	1	37
3 DaSilva, Rafael.....	0-2	0-1	0-0	0	0	0	0	0	0	0	0	0	2
5 Rhalimi, Reda.....	0-0	0-0	0-0	0	0	0	1	0	0	1	0	0	2
0 Waddy, Daniel.....	0-0	0-0	0-0	0	0	0	0	0	0	0	0	0	0+
4 Golden, Todd.....	1-2	0-1	0-0	0	0	0	3	2	0	1	0	0	13
3 Sholberg, Blake.....	0-3	0-0	0-0	1	3	4	0	0	1	2	0	0	17
TEAM.....					1	1							
Totals.....	19-46	1-13	22-26	9	29	38	17	61	6	16	3	3	200

TOTAL FG% 1st Half: 11-25 44.0%	2nd Half: 8-21 38.1%	Game: 41.3%	DEADB
3-Pt. FG% 1st Half: 1-8 12.5%	2nd Half: 0-5 0.0%	Game: 7.7%	REBS
Throw % 1st Half: 6-8 75.0%	2nd Half: 16-18 88.9%	Game: 84.6%	1

HOME TEAM: California 1-1

# Player Name	TOT-FG FG-FGA	3-PT FG-FGA	FT-FTA	REBOUNDS			PF	TP	A	TO	BLK	S	MIN
				OF	DE	TOT							
3 McGuire, Dominic.... f	0-7	0-0	0-0	1	2	3	2	0	3	2	1	0	32
5 Kately, Marquise.... f	10-21	0-0	4-6	5	2	7	2	24	1	3	2	1	36
0 Benson, Rod..... c	1-2	0-0	0-0	1	0	1	5	2	0	1	0	0	10
1 Ubaka, Ayinde..... g	4-5	2-2	0-0	0	2	2	2	10	3	2	0	1	33
5 Midgley, Richard.... g	4-12	1-2	4-5	2	4	6	4	13	1	2	0	1	36
4 Vierneisel, Eric....	0-3	0-2	0-2	0	2	2	4	0	2	0	0	0	13
0 Smith, Martin.....	0-3	0-0	1-2	0	0	0	2	1	0	2	0	0	10
2 Langford, Kevin.....	0-0	0-0	0-0	0	1	1	0	0	0	0	1	0	3
5 Hardin, DeVon.....	0-0	0-0	0-0	1	4	5	1	0	0	0	1	0	13
5 Paris, David.....	1-2	0-0	0-0	0	2	2	2	2	0	2	0	0	14
TEAM.....					1	2	3						
Totals.....	20-55	3-6	9-15	11	21	32	24	52	10	14	5	3	200

TOTAL FG% 1st Half: 8-25 32.0%	2nd Half: 12-30 40.0%	Game: 36.4%	DEADB
3-Pt. FG% 1st Half: 1-3 33.3%	2nd Half: 2-3 66.7%	Game: 50.0%	REBS
Throw % 1st Half: 3-5 60.0%	2nd Half: 6-10 60.0%	Game: 60.0%	1

Officials: Verne Harris, Bruce Hicks, Kevin Brill
 Technical fouls: St. Mary's College-None. California-None.

Attendance: 8516

Score by Periods	1st	2nd	Total
St. Mary's College.....	29	32	61
California.....	20	32	52

ED-314494
 Coaches vs. Cancer Classic--Regional Championship Game
 Regional MVP--Jonathan Sanders
 Points in the paint-SMC 32,CAL 26. Points off turnovers-SMC 15,CAL 16.
 Second chance points-SMC 10,CAL 16. Fast break points-SMC 4,CAL 6.
 Bench points-SMC 2,CAL 3. Score tied-2 times. Lead changed-0 times.
 Last FG-SMC 2nd-02:53, CAL 2nd-00:35.

Official Basketball Box Score -- 1st Half
 St. Mary's College vs California
 11-12-04 7:45pm at Haas Pavilion, Berkeley, California

VISITORS: St. Mary's College 2-(

#	Player Name	TOT-FG			3-PT			REBOUNDS			PF	TP	A	TO	BLK	S	MIN
		FG-FGA	FG-FGA	FT-FTA	FG-FGA	FG-FGA	FT-FTA	OF	DE	TOT							
23	Collins, Brett.....	f	2-4	0-1	2-2	1	1	2	2	6	1	0	0	0	0	10	
32	Sanders, Jonathan...	f	4-7	0-1	2-3	1	3	4	1	10	0	2	1	0	18		
14	Kickert, Daniel.....	c	3-5	0-1	0-1	1	3	4	2	6	0	0	1	0	12		
02	Rowland, E.J.....	g	1-3	1-2	0-0	0	7	7	2	3	1	2	0	0	17		
21	Walberg, Jason.....	g	0-2	0-2	2-2	1	0	1	0	2	0	1	0	0	19		
03	DaSilva, Rafael.....		0-2	0-1	0-0	0	0	0	0	0	0	0	0	0	2		
05	Rhalimi, Reda.....		0-0	0-0	0-0	0	0	0	1	0	0	1	0	0	2		
10	Waddy, Daniel.....		0-0	0-0	0-0	0	0	0	0	0	0	0	0	0	0+		
24	Golden, Todd.....		1-1	0-0	0-0	0	0	0	1	2	0	1	0	0	9		
33	Sholberg, Blake.....		0-1	0-0	0-0	0	1	1	0	0	1	1	0	0	11		
TEAM.....							1	1									
Totals.....			11-25	1-8	6-8	4	16	20	9	29	3	8	2	0	100		

TOTAL FG% 1st Half: 11-25 44.0%
 3-Pt. FG% 1st Half: 1-8 12.5%
 F Throw % 1st Half: 6-8 75.0%

HOME TEAM: California 1-1

#	Player Name	TOT-FG			3-PT			REBOUNDS			PF	TP	A	TO	BLK	S	MIN
		FG-FGA	FG-FGA	FT-FTA	FG-FGA	FG-FGA	FT-FTA	OF	DE	TOT							
03	McGuire, Dominic....	f	0-4	0-0	0-0	0	2	2	0	0	2	2	1	0	17		
25	Kately, Marquise....	f	4-9	0-0	1-2	2	0	2	1	9	0	1	1	0	18		
00	Benson, Rod.....	c	0-0	0-0	0-0	0	0	0	2	0	0	0	0	0	3		
01	Ubaka, Ayinde.....	g	2-2	1-1	0-0	0	1	1	0	5	2	0	0	1	16		
15	Midgley, Richard....	g	1-5	0-0	2-3	0	2	2	3	4	0	1	0	0	18		
14	Vierneisel, Eric....		0-3	0-2	0-0	0	1	1	2	0	0	0	0	0	5		
20	Smith, Martin.....		0-0	0-0	0-0	0	0	0	0	0	0	1	0	0	3		
32	Langford, Kevin....		0-0	0-0	0-0	0	1	1	0	0	0	0	1	0	3		
35	Hardin, DeVon.....		0-0	0-0	0-0	0	2	2	0	0	0	0	0	0	7		
55	Paris, David.....		1-2	0-0	0-0	0	2	2	1	2	0	2	0	0	10		
TEAM.....							1	1	2								
Totals.....			8-25	1-3	3-5	3	12	15	9	20	4	7	3	1	100		

TOTAL FG% 1st Half: 8-25 32.0%
 3-Pt. FG% 1st Half: 1-3 33.3%
 F Throw % 1st Half: 3-5 60.0%

Officials: Verne Harris, Bruce Hicks, Kevin Brill
 Technical fouls: St. Mary's College-None. California-None.

Attendance: 8516
 Score by Periods 1st
 St. Mary's College..... 29
 California..... 20

ID-314494
 Coaches vs. Cancer Classic--Regional Championship Game
 Regional MVP--Jonathan Sanders
 Points in the paint-SMC 18,CAL 12. Points off turnovers-SMC 4,CAL 8.
 2nd chance points-SMC 8,CAL 4. Fast break points-SMC 0,CAL 2.
 Bench points-SMC 2,CAL 2. Score tied-2 times. Lead changed-0 times.
 Last FG-SMC 2nd-02:53, CAL 2nd-00:35.

lay-By-Play
 t. Mary's College vs California
 1-12-04 7:45pm at Haas Pavilion, Berkeley, California

1st PERIOD Play-by-Play (Page 1)

TIME	SCORE	MAR	HOME/VISITOR	TIME	SCORE	MAR	HOME/VISITOR
9:35			TURNOVR by McGuire, Dominic	07:18	10-19	V 9	GOOD! FT SHOT by Collins, Brett
9:20			REBOUND (OFF) by Walberg, Jason	07:18	10-20	V 10	GOOD! FT SHOT by Collins, Brett
9:09	0-2	V 2	GOOD! LAYUP by Collins, Brett	07:03			FOUL by Collins, Brett
8:58			FOUL by Kately, Marquise	07:00			TURNOVR by Smith, Martin
8:58			TURNOVR by Kately, Marquise	06:51			FOUL by Midgley, Richard
8:40			TURNOVR by Sanders, Jonathan	06:51	10-21	V 11	GOOD! FT SHOT by Walberg, Jason
8:19	2-2	T 1	GOOD! LAYUP by Ubaka, Ayinde	06:51	10-22	V 12	GOOD! FT SHOT by Walberg, Jason
8:02			REBOUND (OFF) by Sanders, Jonathan	06:35			REBOUND (DEF) by Sholberg, Blake
7:59			FOUL by Benson, Rod	05:56	10-24	V 14	GOOD! JUMPER by Kickert, Daniel
7:59	2-3	V 1	GOOD! FT SHOT by Sanders, Jonathan	05:44			TIMEOUT 30sec
7:59	2-4	V 2	GOOD! FT SHOT by Sanders, Jonathan	05:26			BLOCK by Sanders, Jonathan
7:44	4-4	T 2	GOOD! JUMPER by Kately, Marquise	05:23			REBOUND (DEF) by Kickert, Daniel
7:44			ASSIST by Ubaka, Ayinde	05:16			REBOUND (DEF) by Midgley, Richard
7:23	4-6	V 2	GOOD! LAYUP by Kickert, Daniel	05:13			FOUL by Kickert, Daniel
7:23			FOUL by Benson, Rod	05:13			MISSED FT SHOT by Midgley, Richard
7:23			MISSED FT SHOT by Kickert, Daniel	05:13			REBOUND (DEF) by Kickert, Daniel
7:23			REBOUND (DEF) by Paris, David	04:46			BLOCK by McGuire, Dominic
7:11			TURNOVR by McGuire, Dominic	04:45			REBOUND (DEF) by Paris, David
6:58			TURNOVR by Rowland, E.J.	04:38			REBOUND (DEF) by Sanders, Jonathan
6:57			STEAL by Ubaka, Ayinde	04:32			TURNOVR by Sanders, Jonathan
6:54			FOUL by Rowland, E.J.	04:08			REBOUND (OFF) by Kately, Marquise
6:37			REBOUND (DEF) by Rowland, E.J.	04:04	12-24	V 12	GOOD! JUMPER by Kately, Marquise
6:23	4-8	V 4	GOOD! LAYUP by Sanders, Jonathan	03:52	12-26	V 14	GOOD! LAYUP by Sanders, Jonathan
6:23			ASSIST by Collins, Brett	03:31	15-26	V 11	GOOD! 3 PTR by Ubaka, Ayinde
6:08			BLOCK by Kickert, Daniel	03:22			TURNOVR by Rowland, E.J.
6:07			REBOUND (DEF) by Sanders, Jonathan	03:22			TIMEOUT media
6:02			REBOUND (DEF) by Midgley, Richard	03:07			REBOUND (DEF) by (TEAM)
5:53	6-8	V 2	GOOD! LAYUP by Midgley, Richard	02:29			REBOUND (DEF) by Hardin, DeVon
5:36			REBOUND (OFF) by Kickert, Daniel	02:10	17-26	V 9	GOOD! JUMPER by Kately, Marquise
5:34	6-10	V 4	GOOD! LAYUP by Kickert, Daniel	02:10			ASSIST by McGuire, Dominic
5:10			REBOUND (DEF) by Rowland, E.J.	01:57			FOUL by Rhalimi, Reda
4:47			BLOCK by Kately, Marquise	01:57			TURNOVR by Rhalimi, Reda
4:46			REBOUND (DEF) by Ubaka, Ayinde	01:46	19-26	V 7	GOOD! JUMPER by Kately, Marquise
4:33			FOUL by Kickert, Daniel	01:46			ASSIST by Ubaka, Ayinde
4:33			TIMEOUT media	01:31	19-29	V 10	GOOD! 3 PTR by Rowland, E.J.
4:18			REBOUND (OFF) by Kately, Marquise	01:31			ASSIST by Sholberg, Blake
4:01	8-10	V 2	GOOD! DUNK by Paris, David	01:23			FOUL by Midgley, Richard
4:01			ASSIST by McGuire, Dominic	01:23			TURNOVR by Midgley, Richard
3:22	8-12	V 4	GOOD! JUMPER by Golden, Todd	01:13			REBOUND (DEF) by McGuire, Dominic
2:58			REBOUND (DEF) by Kickert, Daniel	00:51			FOUL by Rowland, E.J.
2:36			TURNOVR by Sholberg, Blake	00:51	20-29	V 9	GOOD! FT SHOT by Kately, Marquise
2:14			REBOUND (DEF) by Sanders, Jonathan	00:51			MISSED FT SHOT by Kately, Marquise
1:47			REBOUND (DEF) by McGuire, Dominic	00:51			REBOUND (DEF) by Rowland, E.J.
1:39			REBOUND (OFF) by (TEAM)	00:25			REBOUND (DEF) by (TEAM)
1:37			TIMEOUT MEDIA				
1:36			REBOUND (DEF) by Rowland, E.J.				St. Mary's College 29, California 20
1:23			REBOUND (DEF) by Vierneisel, Eric				
1:15			FOUL by Paris, David				
1:15			TURNOVR by Paris, David				
1:03			BLOCK by Langford, Kevin				
0:59			REBOUND (DEF) by Langford, Kevin				
0:54			REBOUND (DEF) by Rowland, E.J.				
0:48			FOUL by Midgley, Richard				
0:40			TURNOVR by Walberg, Jason				
0:21			TURNOVR by Paris, David				
0:51			FOUL by Golden, Todd				
0:51			TURNOVR by Golden, Todd				
0:33			FOUL by Sanders, Jonathan				
0:33	9-12	V 3	GOOD! FT SHOT by Midgley, Richard				
0:33	10-12	V 2	GOOD! FT SHOT by Midgley, Richard				
0:24	10-14	V 4	GOOD! LAYUP by Sanders, Jonathan				
0:15			REBOUND (DEF) by Rowland, E.J.				
0:05	10-16	V 6	GOOD! LAYUP by Sanders, Jonathan				
0:05			ASSIST by Rowland, E.J.				
0:05			FOUL by Vierneisel, Eric				
0:05			MISSED FT SHOT by Sanders, Jonathan				
0:05			REBOUND (DEF) by Hardin, DeVon				
0:41			REBOUND (DEF) by Collins, Brett				
0:11	10-18	V 8	GOOD! LAYUP by Collins, Brett				
0:57			FOUL by Collins, Brett				
0:57			TIMEOUT MEDIA				
0:41			REBOUND (DEF) by Rowland, E.J.				
0:22			REBOUND (OFF) by Collins, Brett				
0:18			FOUL by Vierneisel, Eric				

1st period-only	Paint	Pts	TO	2ndCh	FastB	Bench	Ties	Leads
St. Mary's College	18	4	8	0	2	0	0	
California	12	8	4	2	2	2	0	

NCAA® BASKETBALL SHOT CHART

First Half

Second Half

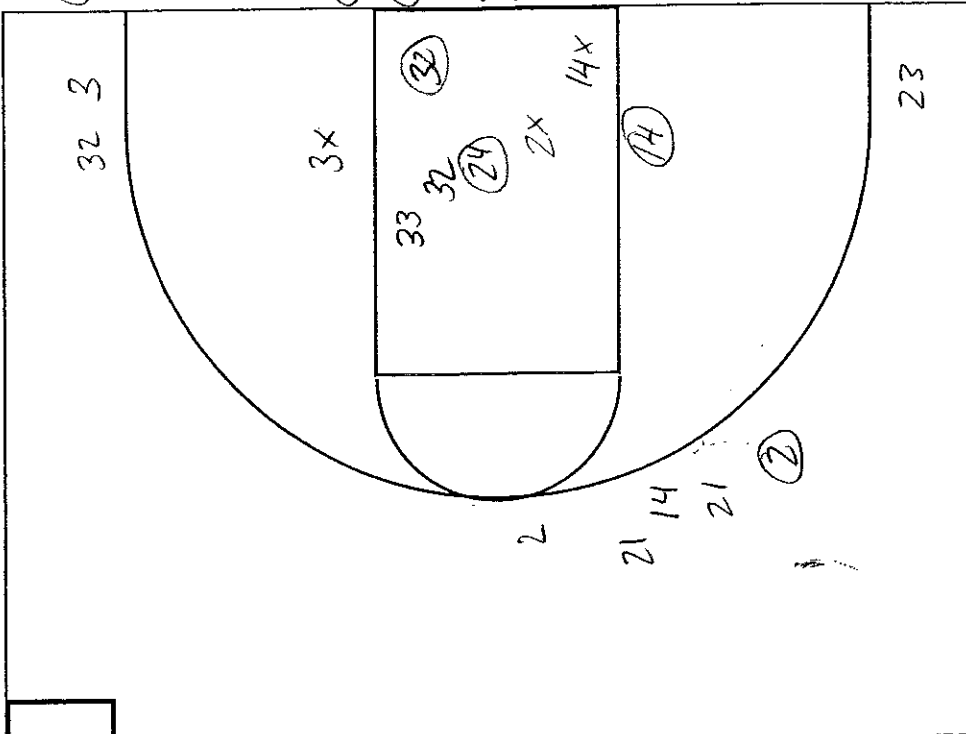
(Circle one)

X = BLOCKED
 * = DUNK
 GT = GOAL TENDERS

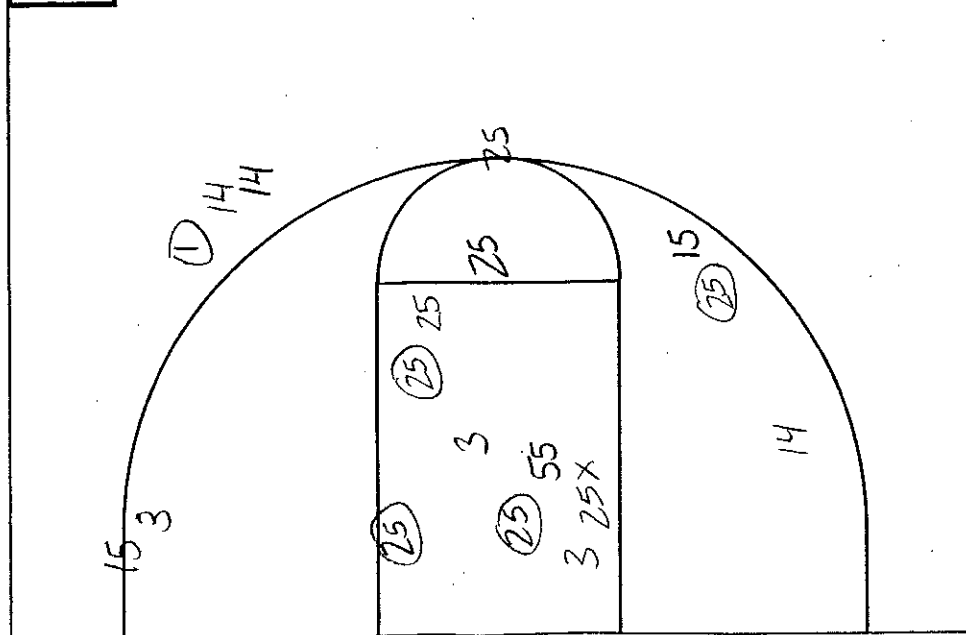
Team Saint Mary's

Team Califormig

COACHES VS CANCER
 LEAS PAVILION
 BERKELEY, CA
 REGIONAL FINAL



Turnovers
3
1
32
25
2
2
3
33
55
4
21
55
5
24
20
6
32
15
7
2
8
5
9
10
11
12
13
14
15
16
17
18
19



Attempted 25
 Made 11
 Percentage 44.0%

3's 1/8

Attempted 25
 Made 8
 Percentage 32.0%

3's 1/3
33.3%

Play-By-Play

St. Mary's College vs California
 1-12-04 7:45pm at Haas Pavilion, Berkeley, California

2nd PERIOD Play-by-Play (Page 1)

TIME	SCORE	MAR	HOME/VISITOR	TIME	SCORE	MAR	HOME/VISITOR
9:39	20-29	V 9	REBOUND (DEF) by Walberg, Jason	07:15			REBOUND (DEF) by Midgley, Richard
9:09	20-31	V 11	GOOD! LAYUP by Sanders, Jonathan	07:08			REBOUND (DEF) by Rowland, E.J.
9:09			ASSIST by Kickert, Daniel	07:02	34-42	V 8	GOOD! DUNK by Sanders, Jonathan
8:43			BLOCK by Kickert, Daniel	07:02			ASSIST by Collins, Brett
8:42			REBOUND (DEF) by Sanders, Jonathan	06:52			TIMEOUT 30sec
8:36			TURNOVR by Sanders, Jonathan	06:39	36-42	V 6	GOOD! JUMPER by Ubaka, Ayinde
8:23	22-31	V 9	GOOD! DUNK by Kately, Marquise	06:39			ASSIST by Kately, Marquise
8:23			ASSIST by McGuire, Dominic	06:21			REBOUND (DEF) by Ubaka, Ayinde
8:05			TURNOVR by Collins, Brett	06:11	38-42	V 4	GOOD! LAYUP by Kately, Marquise
8:05			STEAL by Kately, Marquise	06:11			ASSIST by Ubaka, Ayinde
7:59			REBOUND (OFF) by Benson, Rod	06:11			FOUL by Sanders, Jonathan
7:58	24-31	V 7	GOOD! TIP-IN by Benson, Rod	06:11			TIMEOUT MEDIA
7:56			TIMEOUT 30sec	06:11			MISSED FT SHOT by Kately, Marquise
7:24	24-33	V 9	GOOD! JUMPER by Rowland, E.J.	06:11			REBOUND (DEF) by Rowland, E.J.
6:56	27-33	V 6	GOOD! 3 PTR by Ubaka, Ayinde	05:48			TURNOVR by Sanders, Jonathan
6:31			TURNOVR by Collins, Brett	05:35			REBOUND (DEF) by Kickert, Daniel
6:30			STEAL by Midgley, Richard	05:25	38-44	V 6	GOOD! JUMPER by Rowland, E.J.
6:05			FOUL by Benson, Rod	05:09			REBOUND (DEF) by Kickert, Daniel
6:05			TURNOVR by Benson, Rod	04:48	38-46	V 8	GOOD! LAYUP by Collins, Brett
5:43			FOUL by Benson, Rod	04:36			REBOUND (OFF) by Kately, Marquise
5:43			TIMEOUT MEDIA	04:35			FOUL by Rowland, E.J.
5:43	27-34	V 7	GOOD! FT SHOT by Kickert, Daniel	04:35	39-46	V 7	GOOD! FT SHOT by Kately, Marquise
5:43	27-35	V 8	GOOD! FT SHOT by Kickert, Daniel	04:35	40-46	V 6	GOOD! FT SHOT by Kately, Marquise
5:15			REBOUND (DEF) by Sanders, Jonathan	04:15			REBOUND (OFF) by Rowland, E.J.
5:04			FOUL by Vierneisel, Eric	04:01			FOUL by McGuire, Dominic
5:01			TURNOVR by Walberg, Jason	04:01	40-47	V 7	GOOD! FT SHOT by Rowland, E.J.
4:53			REBOUND (OFF) by McGuire, Dominic	04:01	40-48	V 8	GOOD! FT SHOT by Rowland, E.J.
4:51			FOUL by Kickert, Daniel	03:44			REBOUND (OFF) by Kately, Marquise
4:40			FOUL by Golden, Todd	03:41			REBOUND (OFF) by Kately, Marquise
4:40	28-35	V 7	GOOD! FT SHOT by Midgley, Richard	03:37	42-48	V 6	GOOD! JUMPER by Kately, Marquise
4:40	29-35	V 6	GOOD! FT SHOT by Midgley, Richard	03:08			REBOUND (DEF) by Midgley, Richard
4:30			FOUL by McGuire, Dominic	02:58			TURNOVR by Ubaka, Ayinde
4:29			FOUL by Paris, David	02:58			STEAL by Rowland, E.J.
4:18			REBOUND (DEF) by Kately, Marquise	02:53	42-50	V 8	GOOD! JUMPER by Collins, Brett
4:10			FOUL by Golden, Todd	02:53			ASSIST by Kickert, Daniel
4:10	30-35	V 5	GOOD! FT SHOT by Smith, Martin	02:52			FOUL by Ubaka, Ayinde
4:10			MISSED FT SHOT by Smith, Martin	02:52			TIMEOUT media
4:10			REBOUND (DEF) by Kickert, Daniel	02:52	42-51	V 9	GOOD! FT SHOT by Collins, Brett
3:40			REBOUND (OFF) by Sanders, Jonathan	02:33			TURNOVR by Kately, Marquise
3:35			BLOCK by Kately, Marquise	02:33			STEAL by Walberg, Jason
3:35			REBOUND (DEF) by (TEAM)	02:03			FOUL by Kately, Marquise
3:20			FOUL by Kickert, Daniel	02:03			MISSED FT SHOT by Rowland, E.J.
3:19	32-35	V 3	GOOD! JUMPER by Midgley, Richard	02:03			REBOUND (OFF) by (DEADBALL)
3:19			ASSIST by Vierneisel, Eric	02:03	42-52	V 10	GOOD! FT SHOT by Rowland, E.J.
3:03			TURNOVR by Rowland, E.J.	01:45	45-52	V 7	GOOD! 3 PTR by Midgley, Richard
2:56			TURNOVR by Smith, Martin	01:44			TIMEOUT TEAM
2:50			REBOUND (DEF) by Vierneisel, Eric	01:44			FOUL by Smith, Martin
2:40			TIMEOUT 30sec	01:44	45-53	V 8	GOOD! FT SHOT by Rowland, E.J.
2:18			REBOUND (DEF) by Sholberg, Blake	01:44	45-54	V 9	GOOD! FT SHOT by Rowland, E.J.
2:07			FOUL by Smith, Martin	01:36			TURNOVR by Midgley, Richard
1:51			BLOCK by Hardin, Devon	01:35			STEAL by Collins, Brett
1:50			REBOUND (DEF) by Hardin, Devon	01:20			FOUL by Midgley, Richard
1:34			REBOUND (DEF) by Collins, Brett	01:20	45-55	V 10	GOOD! FT SHOT by Rowland, E.J.
1:15			REBOUND (OFF) by Sholberg, Blake	01:20	45-56	V 11	GOOD! FT SHOT by Rowland, E.J.
1:12			REBOUND (OFF) by Walberg, Jason	01:11	47-56	V 9	GOOD! DUNK by Kately, Marquise
1:04			REBOUND (DEF) by Hardin, Devon	01:11			ASSIST by Vierneisel, Eric
10:44			FOUL by Collins, Brett	01:11			FOUL by Collins, Brett
10:44			TIMEOUT MEDIA	01:11	48-56	V 8	GOOD! FT SHOT by Kately, Marquise
10:44			MISSED FT SHOT by Vierneisel, Eric	01:02			FOUL by Vierneisel, Eric
10:44			REBOUND (OFF) by (DEADBALL)	01:02	48-57	V 9	GOOD! FT SHOT by Collins, Brett
10:44			MISSED FT SHOT by Vierneisel, Eric	01:02	48-58	V 10	GOOD! FT SHOT by Collins, Brett
10:44			REBOUND (OFF) by Hardin, Devon	00:55			REBOUND (OFF) by Midgley, Richard
10:32			TURNOVR by Kately, Marquise	00:52	50-58	V 8	GOOD! LAYUP by Midgley, Richard
10:01	32-37	V 5	GOOD! JUMPER by Sanders, Jonathan	00:52			TIMEOUT 30sec
10:01			FOUL by Hardin, Devon	00:45			FOUL by Benson, Rod
10:01	32-38	V 6	GOOD! FT SHOT by Sanders, Jonathan	00:45	50-59	V 9	GOOD! FT SHOT by Rowland, E.J.
9:50			REBOUND (DEF) by Sholberg, Blake	00:45			MISSED FT SHOT by Rowland, E.J.
9:21	32-40	V 8	GOOD! JUMPER by Collins, Brett	00:45			REBOUND (DEF) by Kately, Marquise
9:05			TURNOVR by Ubaka, Ayinde	00:35	52-59	V 7	GOOD! JUMPER by Kately, Marquise
8:44			REBOUND (OFF) by Sanders, Jonathan	00:35			TIMEOUT 30sec
8:21			TURNOVR by Sholberg, Blake	00:29			TURNOVR by Kickert, Daniel
8:00			REBOUND (OFF) by Midgley, Richard	00:22			REBOUND (DEF) by Rowland, E.J.
7:48	34-40	V 6	GOOD! LAYUP by Kately, Marquise	00:14			FOUL by Ubaka, Ayinde
7:48			ASSIST by Midgley, Richard	00:14	52-60	V 8	GOOD! FT SHOT by Rowland, E.J.

0:14 52-61 V 9 GOOD! FT SHOT by Rowland, E.J.
0:11 REBOUND (DEF) by Rowland, E.J.

St. Mary's College 61, California 52

nd period-only	Paint	Pts	TO	2ndCh	FastB	Bench	Ties	Leads
t. Mary's College	14	11	2	4	0	0	0	
alifornia	14	8	12	4	1	0	0	

NCAA® BASKETBALL SHOT CHART

NOVEMBER 14, 2001
 COACHES VS. CANCEK
 HAAS PAVILION
 BERKELEY, CA
 REGIONAL FINAL

Team California

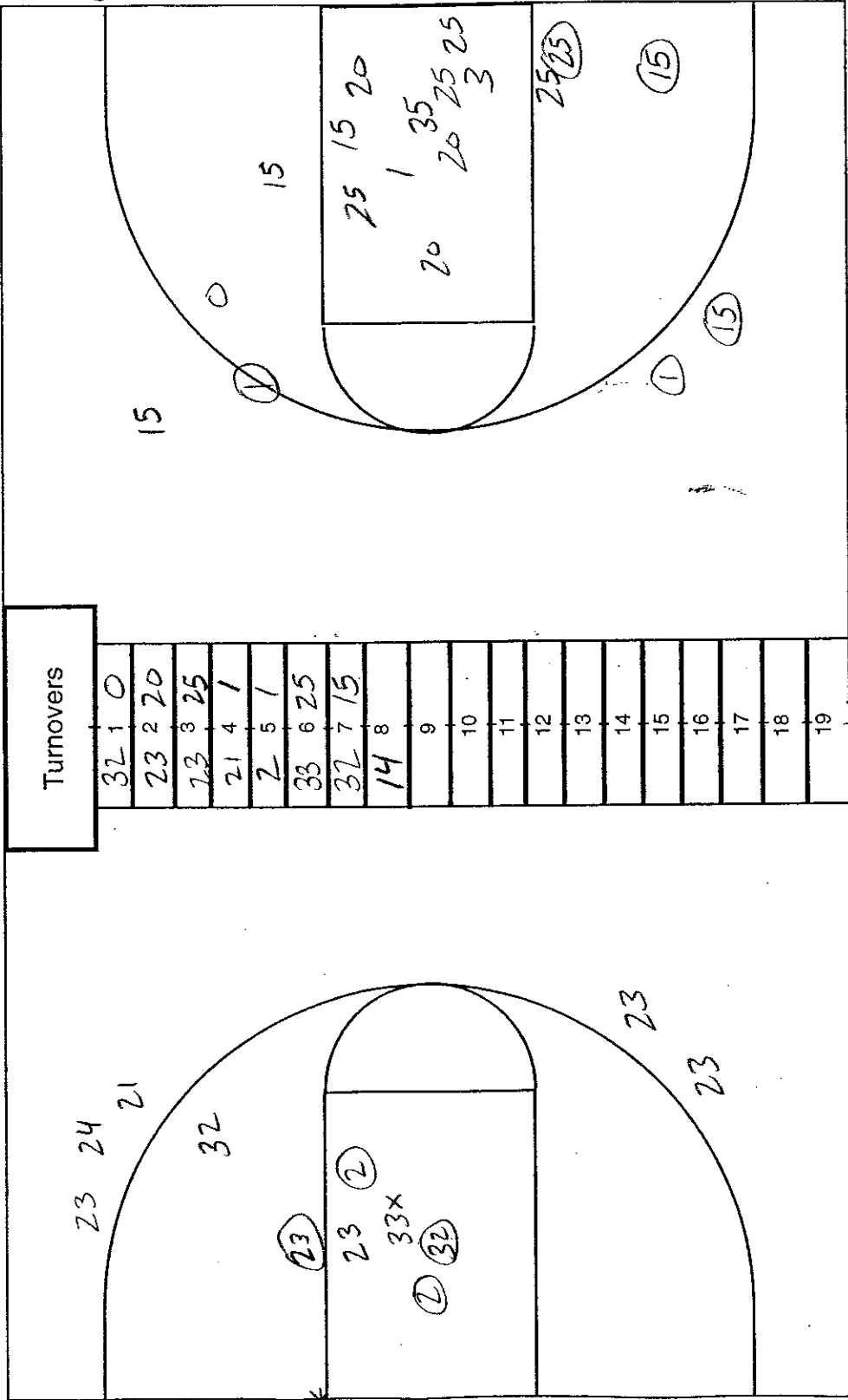
Team SAINT MARY'S

First Half

Second Half

(Circle one)

* = DUNK
 X = BLOCKED



Attempted 30
 Made 12
 Percentage 40.0%
 { 3's 2/3 }
66.7%

Attempted 21
 Made 8
 Percentage 38.1%
 { 3's 0/5 }
0.0%