

November 11th, 2004
University of Memphis
FedExForum
Memphis, Tenn.

REGIONAL ROUNDS - GAME 1
IPFW vs. George Mason

The Coaches vs. Cancer Classic is
produced by the Gazelle Group

OFFICIAL BASKETBALL BOX SCORE -- G A M E T O T A L S

IPFW vs MASON

11/11/04 5:35 pm at Memphis, Tenn. (FedExForum)

VISITORS: IPFW 0-1

No.	N A M E	TOT-FG			3-PT			REBOUNDS			PF	TP	A	TO	BLK	S	MIN
		FG	-FGA		FG	-FGA		OF	DE	TOT							
04	HAWKINS, Justin	f	3-5		0-0		0-0	3	5	8	0	6	2	1	0	27	
42	BUTLER, Quintin	f	5-10		0-1		2-2	4	5	9	2	12	0	2	1	31	
03	MALONE, Byron	g	0-0		0-0		0-0	0	1	1	1	0	4	0	9		
05	CAROUTHERS, Quintin	g	3-11		0-2		2-2	2	2	4	1	8	2	0	0	33	
20	BAUER, Beau	g	2-13		1-7		2-2	0	2	2	2	7	3	5	0	35	
02	MUTZFELD, Eric		0-0		0-0		0-0	0	0	0	0	0	0	0	1		
24	MALONE, Jason		3-8		2-3		1-4	0	4	4	1	9	4	3	0	32	
33	CAMPBELL, Peter		3-8		1-4		0-0	2	2	4	0	7	0	1	0	20	
40	CAMPBELL, Charles		1-4		0-0		0-0	1	0	1	0	2	0	0	1	11	
50	EGERIC, Zeljko		0-0		0-0		0-0	0	0	0	0	0	0	0	1		
TEAM								1	2	3							
TOTALS			20-59		4-17		7-10	13	23	36	7	51	11	16	1	3	200

TOT-FG 1stH:	10-30	33.3%	2ndH:	10-29	34.5%	OT:	0-0	00.0%	Game:	33.9%	Deadbl
3pt-FG 1stH:	1-7	14.3%	2ndH:	3-10	30.0%	OT:	0-0	00.0%	Game:	23.5%	Rebs
FThrow 1stH:	3-4	75.0%	2ndH:	4-6	66.7%	OT:	0-0	00.0%	Game:	70.0%	2, 2

HOME TEAM: MASON 1-0

No.	N A M E	TOT-FG			3-PT			REBOUNDS			PF	TP	A	TO	BLK	S	MIN
		FG	-FGA		FG	-FGA		OF	DE	TOT							
13	Urbina, Jesus	f	1-3		0-0		0-0	0	1	1	1	2	0	1	1	20	
55	Lewis, Jai	f	5-13		0-0		2-3	2	6	8	2	12	5	1	1	31	
05	Norwood, Gabe	g	5-9		0-1		0-0	0	4	4	2	10	2	4	0	28	
12	Burns, Tim	g	4-8		3-5		0-0	1	1	2	3	11	6	0	1	27	
22	Butler, Lamar	g	6-13		2-6		2-2	0	4	4	2	16	3	2	0	25	
02	Carter, Jordan		0-0		0-0		0-0	0	0	0	1	0	0	1	0	7	
03	Konate, Makan		0-0		0-0		0-0	0	0	0	0	0	0	0	0	1	
23	Vaughan, John		4-7		3-5		0-0	0	4	4	1	11	1	0	0	18	
24	Makings, Charles		0-0		0-0		0-0	0	0	0	1	0	0	0	0	3	
34	Thomas, Will		2-2		0-0		0-0	2	6	8	1	4	2	1	1	23	
42	Campbell, Folarin		1-3		1-2		0-0	0	1	1	1	3	3	2	0	17	
TEAM								0	0	0							
TOTALS			28-58		9-19		4-5	5	27	32	15	69	22	12	4	11	200

TOT-FG 1stH:	17-32	53.1%	2ndH:	11-26	42.3%	OT:	0-0	00.0%	Game:	48.3%	Deadbl
3pt-FG 1stH:	7-9	77.8%	2ndH:	2-10	20.0%	OT:	0-0	00.0%	Game:	47.4%	Rebs
FThrow 1stH:	4-5	80.0%	2ndH:	0-0	00.0%	OT:	0-0	00.0%	Game:	80.0%	1

OFFICIALS: Karl Hess, Ray Natili, Alan Spainhour

TECHNICAL FOULS:

IPFW - none

MASON - none

ATTENDANCE:

SCORE BY PERIODS:	1st	2nd	OT1	OT2	OT3	OT4	TOTAL
IPFW	24	27					51
MASON	45	24					69

Coaches vs. Cancer -- Opening Round, Game 1

OFFICIAL BASKETBALL BOX SCORE -- F I R S T H A L F -- END OF PERIOD 1
 IPFW vs MASON
 11/11/04 5:35 pm at Memphis, Tenn. (FedExForum)

VISITORS: IPFW

No.	NAME	f	TOT-FG 3-PT			REBOUNDS			PF	TP	A	TO	BLK	S	MIN
			FG-FGA	FG-FGA	FT-FTA	OF	DE	TOT							
04	HAWKINS, Justin	f	2-2	0-0	0-0	0	4	4	0	4	0	1	0	0	14
42	BUTLER, Quintin	f	3-5	0-0	2-2	3	3	6	1	8	0	0	1	0	16
03	MALONE, Byron	g	0-0	0-0	0-0	0	1	1	1	0	0	4	0	0	9
05	CAROTHERS, Quintin	g	1-5	0-1	0-0	0	1	1	1	2	1	0	0	0	15
20	BAUER, Beau	g	1-7	1-4	0-0	0	1	1	1	3	3	3	0	0	18
24	MALONE, Jason		1-4	0-0	1-2	0	2	2	0	3	1	1	0	1	13
33	CAMPBELL, Peter		2-5	0-2	0-0	2	0	2	0	4	0	0	0	0	8
40	CAMPBELL, Charles		0-2	0-0	0-0	0	0	0	0	0	0	0	0	1	7
TEAM						1	0	1							
TOTALS			10-30	1-7	3-4	6	12	18	4	24	5	9	1	2	100

TOT-FG 1stH:	10-30	33.3%	2ndH:	0-0	00.0%	OT:	0-0	00.0%	Game:	33.3%	Deadbl
3pt-FG 1stH:	1-7	14.3%	2ndH:	0-0	00.0%	OT:	0-0	00.0%	Game:	14.3%	Rebs
FThrow 1stH:	3-4	75.0%	2ndH:	0-0	00.0%	OT:	0-0	00.0%	Game:	75.0%	0

HOME TEAM: MASON

No.	NAME	f	TOT-FG 3-PT			REBOUNDS			PF	TP	A	TO	BLK	S	MIN
			FG-FGA	FG-FGA	FT-FTA	OF	DE	TOT							
13	Urbina, Jesus	f	0-2	0-0	0-0	0	1	1	0	0	0	0	0	2	10
55	Lewis, Jai	f	4-9	0-0	2-3	1	3	4	0	10	3	1	1	0	15
05	Norwood, Gabe	g	2-4	0-0	0-0	0	2	2	0	4	2	2	0	2	13
12	Burns, Tim	g	2-4	2-2	0-0	1	0	1	1	6	3	0	1	0	13
22	Butler, Lamar	g	3-3	1-1	2-2	0	2	2	2	9	0	1	0	1	8
02	Carter, Jordan		0-0	0-0	0-0	0	0	0	0	0	0	0	0	0	6
23	Vaughan, John		4-6	3-4	0-0	0	3	3	1	11	1	0	0	0	11
24	Makings, Charles		0-0	0-0	0-0	0	0	0	1	0	0	0	0	0	3
34	Thomas, Will		1-1	0-0	0-0	2	4	6	1	2	2	0	0	0	12
42	Campbell, Folarin		1-3	1-2	0-0	0	0	0	1	3	2	1	0	0	9
TEAM						0	0	0							
TOTALS			17-32	7-9	4-5	4	15	19	7	45	13	5	2	5	100

TOT-FG 1stH:	17-32	53.1%	2ndH:	0-0	00.0%	OT:	0-0	00.0%	Game:	53.1%	Deadbl
3pt-FG 1stH:	7-9	77.8%	2ndH:	0-0	00.0%	OT:	0-0	00.0%	Game:	77.8%	Rebs
FThrow 1stH:	4-5	80.0%	2ndH:	0-0	00.0%	OT:	0-0	00.0%	Game:	80.0%	0

OFFICIALS: Karl Hess, Ray Natili, Alan Spainhour

TECHNICAL FOULS:

IPFW - none
 MASON - none

ATTENDANCE:

SCORE BY PERIODS:	1st	2nd	OT1	OT2	OT3	OT4	TOTAL
IPFW	24						24
MASON	45						45

Coaches vs. Cancer -- Opening Round, Game 1

HOME TEAM: MASON	TIME	SCORE	MAR	VISITORS: IPFW
missed 2-Pntr by Lewis, Jai	19:50			
	19:50			BLOCKED by BUTLER, Quint
	19:48			REBOUND(DEF) by BUTLER, Quint
	19:34			missed 2-Pntr by BUTLER, Quint
REBOUND(DEF) by Butler, Lamar	19:34			
missed 2-Pntr by Burns, Tim	19:25			
	19:25			REBOUND(DEF) by BUTLER, Quint
	19:17	0-2	V 2	made FASTB 2Pntr-CAROUTHERS,
made 2-Pntr by Lewis, Jai	18:58	2-2	T 1	
ASSIST by Norwood, Gabe	18:58			
	18:42			TURNOVER by MALONE, Byron
STEAL by Urbina, Jesus	18:42			
	18:28			FOUL on CAROUTHERS, Q(P1T1)
made F THROW by Lewis, Jai	18:28	3-2	H 1	
made F THROW by Lewis, Jai	18:28	4-2	H 2	
	18:07	4-4	T 2	made 2-Pntr by HAWKINS, Just
	18:07			ASSIST by CAROUTHERS, Q
TURNOVER by Norwood, Gabe	17:50			
	17:40			TURNOVER by MALONE, Byron
STEAL by Butler, Lamar	17:38			
	17:36			FOUL on BAUER, Beau (P1T2)
made F THROW by Butler, Lamar	17:36	5-4	H 1	
made F THROW by Butler, Lamar	17:36	6-4	H 2	
	17:33			TURNOVER by MALONE, Byron
STEAL by Urbina, Jesus	17:32			
missed LayUp by Norwood, Gabe	17:29			
	17:29			REBOUND(DEF) by HAWKINS, Just
	17:04			missed 3-Pntr by CAROUTHERS, Q
REBOUND(DEF) by Butler, Lamar	17:04			
missed 2-Pntr by Lewis, Jai	16:51			
	16:51			REBOUND(DEF) by HAWKINS, Just
	16:40			missed LayUp by BAUER, Beau
	16:40			REBOUND(OFF) by BUTLER, Quint
	16:36	6-6	T 3	made Tip-In by BUTLER, Quint
TURNOVER by Lewis, Jai	16:25			
	16:15			missed 3-Pntr by BAUER, Beau
	16:04			missed LayUp by MALONE, Jason
REBOUND(DEF) by Urbina, Jesus	16:04			
TURNOVER by Butler, Lamar	15:45			
	15:44			TURNOVER by MALONE, Jason
	15:36			--- MEDIA TIMEOUT ---
	15:20	6-8	V 2	made 2-Pntr by HAWKINS, Just
	15:20			ASSIST by BAUER, Beau
made LayUp by Thomas, Will	15:01	8-8	T 4	
ASSIST by Campbell, Fol	15:01			
	14:50			TURNOVER by BAUER, Beau
STEAL by Norwood, Gabe	14:49			
made FASTB LayUp-Norwood, Gab	14:45	10-8	H 2	
FOUL on Thomas, Will (P1T1)	14:29			
FOUL on Vaughan, John(P1T2)	14:29			
	14:15	10-11	V 1	made 3-Pntr by BAUER, Beau
	14:15			ASSIST by MALONE, Jason
made LayUp by Lewis, Jai	14:00	12-11	H 1	
ASSIST by Vaughan, John	14:00			
	13:47	12-13	V 1	made 2-Pntr by CAMPBELL, Pet
	13:47			ASSIST by BAUER, Beau

made 2-Pntr by Lewis, Jai	13:31	14-13	H 1	
ASSIST by Campbell, Fol	13:31			
	13:14	14-15	V 1	made 2-Pntr by BUTLER, Quint
	13:14			ASSIST by BAUER, Beau
missed 2-Pntr by Lewis, Jai	12:57			
	12:57			REBOUND(DEF) by BAUER, Beau
	12:43			missed 2-Pntr by CAMPBELL, Pet
REBOUND(DEF) by Thomas, Will	12:43			
missed 3-Pntr by Campbell, Fol	12:37			REBOUND(DEF) by MALONE, Jason
	12:37			missed 2-Pntr by CAMPBELL, Cha
	12:13			
REBOUND(DEF) by Thomas, Will	12:13			
TURNOVER by Campbell, Fol	11:56			
	11:53			STEAL by CAMPBELL, Cha
	11:35			missed 3-Pntr by CAMPBELL, Pet
REBOUND(DEF) by Vaughan, John	11:35			
missed 2-Pntr by Lewis, Jai	11:18			
	11:18			REBOUND(DEF) by BUTLER, Quint
	11:10			--- 30sec TIMEOUT ---
	10:56			missed 3-Pntr by CAMPBELL, Pet
REBOUND(DEF) by Thomas, Will	10:56			
made FASTB 3Pntr-Campbell, Fo	10:47	17-15	H 2	
ASSIST by Lewis, Jai	10:47			
	10:40			missed 2-Pntr by CAROTHERS, Q
	10:40			
REBOUND(DEF) by Thomas, Will	10:40			
made 2-Pntr by Butler, Lamar	10:00	19-15	H 4	
FOUL on Butler, Lamar(P1T3)	09:48			
	09:48			--- MEDIA TIMEOUT ---
	09:34			missed LayUp by CAROTHERS, Q
	09:34			REBOUND(OFF) by BUTLER, Quint
	09:29	19-17	H 2	made 2-Pntr by BUTLER, Quint
made 2-Pntr by Butler, Lamar	09:24	21-17	H 4	
	09:16			TURNOVER by HAWKINS, Just
missed 2-Pntr by Norwood, Gabe	08:56			
REBOUND(OFF) by Thomas, Will	08:56			
missed LayUp by Lewis, Jai	08:45			
REBOUND(OFF) by Lewis, Jai	08:45			
made LayUp by Lewis, Jai	08:44	23-17	H 6	
	08:44			FOUL on BUTLER, Quint(P1T3)
missd F THROW by Lewis, Jai	08:44			
REBOUND(OFF) by Thomas, Will	08:44			
made 3-Pntr by Butler, Lamar	08:39	26-17	H 9	
ASSIST by Norwood, Gabe	08:39			
	08:20			TURNOVER by BAUER, Beau
made 3-Pntr by Burns, Tim	08:02	29-17	H12	
ASSIST by Lewis, Jai	08:02			
	07:59			--- 30sec TIMEOUT ---
FOUL on Butler, Lamar(P2T4)	07:50			
	07:50			--- MEDIA TIMEOUT ---
	07:26			TURNOVER by BAUER, Beau
missed 3-Pntr by Vaughan, John	07:04			
	07:04			REBOUND(DEF) by CAROTHERS, Q
	06:53			missed 2-Pntr by MALONE, Jason
REBOUND(DEF) by Vaughan, John	06:53			
missed 2-Pntr by Burns, Tim	06:46			
	06:46			REBOUND(DEF) by MALONE, Jason
	06:20	29-19	H10	made 2-Pntr by MALONE, Jason
made 3-Pntr by Vaughan, John	05:50	32-19	H13	
ASSIST by Burns, Tim	05:50			
	05:28			missed 3-Pntr by BAUER, Beau

REBOUND(DEF) by Vaughan, John	05:28			
TURNOVER by Norwood, Gabe	05:16			
	05:16			STEAL by MALONE, Jason
	05:00			missed 2-Pntr by CAMPBELL, Cha
REBOUND(DEF) by Lewis, Jai	05:00			
missed LayUp by Urbina, Jesus	04:44			
REBOUND(OFF) by Burns, Tim	04:44			
made 2-Pntr by Vaughan, John	04:38	34-19	H15	
ASSIST by Burns, Tim	04:38			
	04:10			missed LayUp by BAUER, Beau
BLOCKED by Lewis, Jai	04:10			
REBOUND(DEF) by Norwood, Gabe	04:08			
made 3-Pntr by Vaughan, John	03:52	37-19	H18	
ASSIST by Lewis, Jai	03:52			
	03:37			missed 2-Pntr by CAROUTHERS, Q
BLOCKED by Burns, Tim	03:37			
REBOUND(DEF) by Lewis, Jai	03:34			
made 3-Pntr by Vaughan, John	03:24	40-19	H21	
ASSIST by Burns, Tim	03:24			
	03:09			missed 2-Pntr by MALONE, Jason
REBOUND(DEF) by Lewis, Jai	03:09			
missed 2-Pntr by Urbina, Jesus	02:51			
	02:51			REBOUND(DEF) by HAWKINS, Just
FOUL on Burns, Tim (P1T5)	02:42			
	02:42			--- MEDIA TIMEOUT ---
FOUL on Campbell, Fol(P1T6)	02:32			
	02:32	40-20	H20	made F THROW by BUTLER, Quint
	02:32	40-21	H19	made F THROW by BUTLER, Quint
made 3-Pntr by Burns, Tim	02:08	43-21	H22	
ASSIST by Thomas, Will	02:08			
	01:46			missed 2-Pntr by BAUER, Beau
	01:46			REBOUND(OFF) by CAMPBELL, Pet
	01:43	43-23	H20	made Tip-In by CAMPBELL, Pet
missed 2-Pntr by Campbell, Fol	01:18			
	01:18			REBOUND(DEF) by MALONE, Byron
FOUL on Makings, Char(P1T7)	01:09			
	01:09	43-24	H19	made F THROW by MALONE, Jason
	01:09			missd F THROW by MALONE, Jason
REBOUND(DEF) by Norwood, Gabe	01:09			
made LayUp by Norwood, Gabe	00:55	45-24	H21	
ASSIST by Thomas, Will	00:55			
	00:36			TURNOVER by MALONE, Byron
STEAL by Norwood, Gabe	00:36			
	00:36			FOUL on MALONE, Byron(P1T4)
missed 2-Pntr by Vaughan, John	00:24			
	00:24			REBOUND(DEF) by HAWKINS, Just
	00:07			missed 3-Pntr by BAUER, Beau
	00:07			REBOUND(OFF) by BUTLER, Quint
	00:02			missed 2-Pntr by BUTLER, Quint
	00:02			REBOUND(OFF) by CAMPBELL, Pet

SCORE: MASON 45, IPFW 24

=====SPECIALTY STATS FOR 1st half=====

PTS IN THE PAINT: IPFW - 12 MASON - 14
 PTS OFF TURNOVERS: IPFW - 00 MASON - 14
 2ND CHANCE POINTS: IPFW - 06 MASON - 07
 FAST BREAK POINTS: IPFW - 02 MASON - 05

#TIES= 4; #LEAD CHANGES= 9; LARGEST LEAD= 22 by MASON at 01:46

=====

IPFW vs MASON 11/11/04 5:35 pm PAGE 001
 - - - S E C O N D H A L F P L A Y B Y P L A Y - - -
 HOME TEAM: MASON TIME SCORE MAR VISITORS: IPFW

missed 2-Pntr by Lewis, Jai 19:50
 19:50 REBOUND(DEF) by HAWKINS, Just
 19:36 missed 2-Pntr by HAWKINS, Just

REBOUND(DEF) by Lewis, Jai 19:36
 TURNOVER by Urbina, Jesus 19:23
 19:06 missed 2-Pntr by BUTLER, Quint
 19:06 REBOUND(OFF) by CAROTHERS, Q
 19:03 missed Tip-In by CAROTHERS, Q
 19:03 REBOUND(OFF) by CAROTHERS, Q
 18:58 45-26 H19 made LayUp by CAROTHERS, Q

TURNOVER by Norwood, Gabe 18:40
 18:37 STEAL by MALONE, Jason
 18:28 45-28 H17 made 2-Pntr by BUTLER, Quint
 18:28 ASSIST by HAWKINS, Just

made LayUp by Butler, Lamar 18:07 47-28 H19
 ASSIST by Lewis, Jai 18:07
 FOUL on Lewis, Jai (P1T1) 17:48

made 3-Pntr by Butler, Lamar 17:48 47-29 H18 made F THROW by BAUER, Beau
 17:48 47-30 H17 made F THROW by BAUER, Beau

BLOCKED by Urbina, Jesus 17:39 50-30 H20
 17:06 missed 2-Pntr by BAUER, Beau

missed 2-Pntr by Butler, Lamar 17:06
 17:04 REBOUND(OFF) by HAWKINS, Just
 17:01 50-32 H18 made 2-Pntr by HAWKINS, Just

missed 2-Pntr by Butler, Lamar 16:56
 16:56 REBOUND(DEF) by BUTLER, Quint
 16:48 50-34 H16 made FASTB LayUp-BAUER, Beau
 16:48 ASSIST by MALONE, Jason

made LayUp by Urbina, Jesus 16:26 52-34 H18
 ASSIST by Burns, Tim 16:26
 16:13 TURNOVER by BUTLER, Quint

STEAL by Burns, Tim 16:11
 missed 3-Pntr by Butler, Lamar 16:05
 REBOUND(OFF) by Lewis, Jai 16:05
 missed 3-Pntr by Burns, Tim 16:00
 FOUL on Burns, Tim (P2T2) 15:46
 15:46 --- MEDIA TIMEOUT ---
 15:45 TURNOVER by MALONE, Jason

STEAL by Campbell, Fol 15:43
 made FASTB LayUp-Norwood, Gab 15:41 54-34 H20
 ASSIST by Campbell, Fol 15:41
 15:25 missed 2-Pntr by CAMPBELL, Cha

REBOUND(DEF) by Vaughan, John 15:25
 TURNOVER by Campbell, Fol 15:18
 15:03 missed LayUp by CAROTHERS, Q

BLOCKED by Thomas, Will 15:03
 15:02 REBOUND(OFF) by HAWKINS, Just
 14:58 54-37 H17 made 3-Pntr by MALONE, Jason
 14:58 ASSIST by HAWKINS, Just

missed 2-Pntr by Norwood, Gabe 14:27
 FOUL on Lewis, Jai (P2T3) 14:25
 14:16 54-39 H15 made LayUp by BUTLER, Quint
 14:16 ASSIST by MALONE, Jason

--- 30sec TIMEOUT --- 14:12
 missed 3-Pntr by Butler, Lamar 13:51
 13:51 REBOUND(DEF) by MALONE, Jason.

	13:41			missed 3-Pntr by BAUER, Beau
REBOUND(DEF) by Campbell, Fol	13:41			
missed 2-Pntr by Butler, Lamar	13:32			
	13:32			REBOUND(DEF) by CAROTHERS, Q
missed 2-Pntr by Lewis, Jai	13:03	54-42	H12	made 3--Pntr by CAMPBELL, Pet
	12:46			
	12:46			REBOUND(DEF) by CAMPBELL, Pet
	12:17			missed 2-Pntr by CAROTHERS, Q
	12:17			REBOUND(OFF) by BUTLER, Quint
	12:00			missed 2-Pntr by MALONE, Jason
REBOUND(DEF) by Lewis, Jai	12:00			
--- MEDIA TIMEOUT ---	11:42			
made LayUp by Thomas, Will	11:28	56-42	H14	
ASSIST by Butler, Lamar	11:28			
	10:49			missed 3-Pntr by BUTLER, Quint
REBOUND(DEF) by Norwood, Gabe	10:49			
missed 3-Pntr by Butler, Lamar	10:27			
	10:25			FOUL on BUTLER, Quint(P2T1)
missed 2-Pntr by Butler, Lamar	10:14			
	09:46			missed 2--Pntr by BUTLER, Quint
REBOUND(DEF) by Thomas, Will	09:46			
TURNOVER by Thomas, Will	09:34			
	09:11	56-45	H11	made 3-Pntr by MALONE, Jason
	09:11			ASSIST by CAROTHERS, Q
made 2-Pntr by Burns, Tim	08:48	58-45	H13	
	08:31			missed 3-Pntr by CAMPBELL, Pet
	08:31			REBOUND(OFF) by HAWKINS, Just
	08:25			missed 3-Pntr by CAROTHERS, Q
REBOUND(DEF) by Burns, Tim	08:25			
missed 3-Pntr by Burns, Tim	07:52			
	07:52			REBOUND(DEF) by BUTLER, Quint
	07:35			missed 2-Pntr by HAWKINS, Just
REBOUND(DEF) by Norwood, Gabe	07:35			
missed 3-Pntr by Vaughan, John	07:27			
	07:27			REBOUND(DEF) by MALONE, Jason
	07:22			TURNOVER by MALONE, Jason
STEAL by Vaughan, John	07:21			
missed 3-Pntr by Norwood, Gabe	07:05			
	07:03			--- MEDIA TIMEOUT ---
	06:51			missed 3-Pntr by BAUER, Beau
	06:51			REBOUND(OFF) by CAMPBELL, Cha
	06:32			TURNOVER by BAUER, Beau
STEAL by Norwood, Gabe	06:31			
missed 3-Pntr by Butler, Lamar	06:04			
	06:04			REBOUND(DEF) by BAUER, Beau
	05:49	58-47	H11	made 2-Pntr by CAROTHERS, Q
made LayUp by Norwood, Gabe	05:32	60-47	H13	
ASSIST by Burns, Tim	05:32			
	05:10	60-49	H11	made LayUp by CAMPBELL, Cha
	05:10			ASSIST by MALONE, Jason
made Dunk by Norwood, Gabe	04:52	62-49	H13	
ASSIST by Lewis, Jai	04:52			
	04:31			missed 3-Pntr by BAUER, Beau
FOUL on Urbina, Jesus(P1T4)	04:26			
FOUL on Burns, Tim (P3T5)	04:09			
	04:09	62-50	H12	made F THROW by CAROTHERS, Q
	04:09	62-51	H11	made F THROW by CAROTHERS, Q
	04:09			--- 30sec TIMEOUT ---
made 3-Pntr by Burns, Tim	04:05	65-51	H14	
ASSIST by Butler, Lamar	04:05			

REBOUND(DEF) by Thomas, Will	03:41			missed 3-Pntr by MALONE, Jason
TURNOVER by Butler, Lamar	03:41			
	03:31			--- MEDIA TIMEOUT ---
	03:31			missed LayUp by BAUER, Beau
REBOUND(DEF) by Butler, Lamar	03:08			
missed LayUp by Lewis, Jai	02:47			REBOUND(DEF) by CAMPBELL, Pet
	02:47			
FOUL on Norwood, Gabe(P1T6)	02:40			missd F THROW by MALONE, Jason
	02:40			missd F THROW by MALONE, Jason
	02:40			
REBOUND(DEF) by Lewis, Jai	02:40			
--- 30sec TIMEOUT ---	02:31			
FOUL on Norwood, Gabe(P2T7)	02:24			TURNOVER by BUTLER, Quint
TURNOVER by Norwood, Gabe	02:24			
	02:06			
STEAL by Lewis, Jai	02:05			FOUL on BAUER, Beau (P2T2)
	01:54			
made LayUp by Lewis, Jai	01:35	67-51	H16	
ASSIST by Butler, Lamar	01:35			missed 2-Pntr by CAMPBELL, Pet
	01:21			
REBOUND(DEF) by Butler, Lamar	01:21			
made 2-Pntr by Butler, Lamar	00:56	69-51	H18	
ASSIST by Burns, Tim	00:56			
	00:40			TURNOVER by BAUER, Beau
FOUL on Carter, Jorda(P1T8)	00:33			
TURNOVER by Carter, Jorda	00:33			TURNOVER by CAMPBELL, Pet
	00:19			
STEAL by Thomas, Will	00:17			FOUL on MALONE, Jason(P1T3)
	00:11			

SCORE: MASON 69, IPFW 51

=====SPECIALTY STATS FOR 2nd half=====

PTS IN THE PAINT: IPFW - 12 MASON - 16

PTS OFF TURNOVERS: IPFW - 10 MASON - 04

2ND CHANCE POINTS: IPFW - 07 MASON - 00

FAST BREAK POINTS: IPFW - 02 MASON - 02

#TIES= 0; #LEAD CHANGES= 1; LARGEST LEAD= 21 by MASON at 19:03

=====

NCAA® BASKETBALL SHOT CHART

First Half

Second Half

(Circle one)

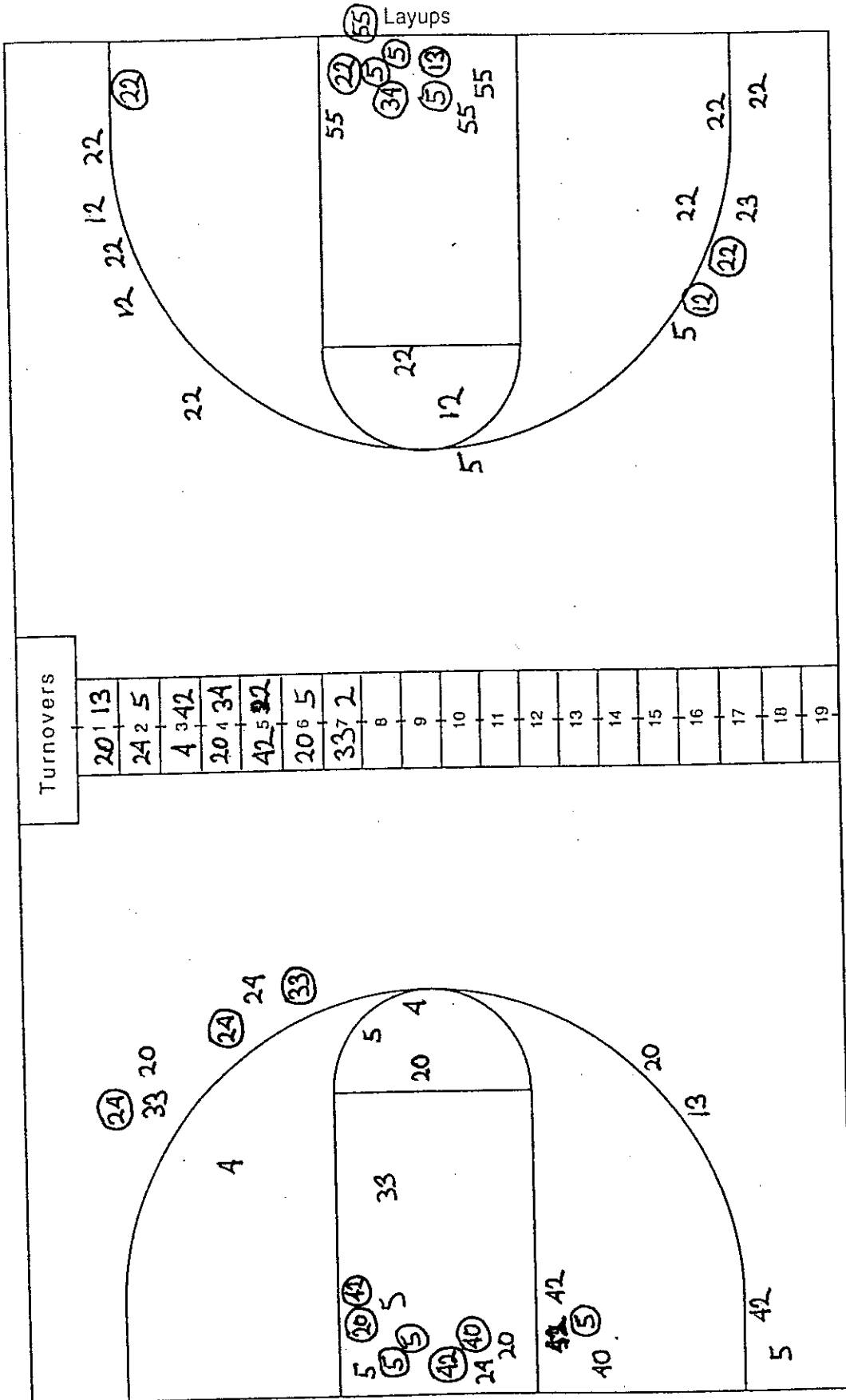
Team George Mason

Team

11-11-2004

Team IPFW

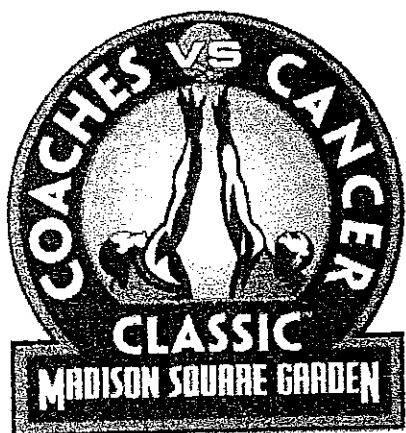
Team



Attempted 26
 Made 10
 Percentage _____

Attempted 29
 Made 10
 Percentage _____

Layups



Regional Rounds --- Game 1

IPFW vs. George Mason

November 11, 2004
University of Memphis, host
FedExForum • Memphis, Tenn.

Postgame Quotes

George Mason

Head Coach Jim Larranga

"We have four guys that can really shoot the three. You never know how you are going to come out and play but I was extremely pleased that they all came out very aggressive and looking to execute our offense, and sharing the ball. When you get shots in rhythm, you expect to make them and we got a bunch of those in the first half and scoring 45 points in the first half is an outstanding way to start in your first game of the season with such a young team."

"Honestly, Jai Lewis didn't play as well as he normally does. He's usually over a 60 percent shooter but we like that we ended up with five guys in double figures. We played all 11 guys that dressed and we feel good that Jai was able to get a lot of touches because when he touches the ball good things happen."

"We're pleased with the effort and intensity with which we played and we are just looking forward to moving onto the championship game of this region."

IPFW

Head Coach Doug Noll

"If you take those eight minutes out of the first half we played a decent basketball game for the first game of the year. I give George Mason a lot of credit. When the lights went out in the building I think we left the building too. It was a struggle for us because we let their pressure get to us. We made unforced errors and mistakes and took bad shots. We made some good adjustments at halftime based on their defensive pressure and up until the last four minutes we got to within 11 points. We just ran out of gas. I do not think we scored in the last four minutes."

"Quintin Butler played really well for us. We did not shoot the ball well and that stretch for eight minutes did us in and we are dinged up a little. Hopefully we can come out of this region with a split and we are a young basketball team and just need to bounce back Saturday."