



Official Basketball Box Score -- Game Totals -- Final Statistics
Kennesaw State vs LSU
 11/16/15 8:05 pm at Maravich Center (Baton Rouge, LA)



Kennesaw State 69 • 0-2

#	Player		Total			3-Ptr			Rebounds			PF	TP	A	TO	Blk	Stl	Min
			FG-FGA	FG-FGA	FT-FTA	FG-FGA	FG-FGA	FT-FTA	Off	Def	Tot							
01	PRUITT, Nigel	f	6-13	0-2	3-3				5	7	12	3	15	2	3	0	3	31
02	JONES, Jordan	f	1-4	0-0	0-0				0	2	2	2	2	1	1	0	0	15
00	RAY, Kendrick	g	7-17	2-4	9-13				0	2	2	2	25	2	2	0	0	39
04	BROWN, Yonel	g	4-14	3-8	0-0				0	0	0	4	11	3	4	0	0	34
21	MASTERSON, Nick	g	3-8	2-5	0-0				2	3	5	2	8	1	1	0	0	28
03	HECTOR, Tracy		0-1	0-0	0-0				0	0	0	0	0	0	1	0	1	13
05	MORENA, Bernard		1-1	0-0	0-0				1	0	1	2	2	0	2	0	0	7
11	CLARKE, Kyle		0-1	0-0	0-0				1	1	2	1	0	0	2	0	0	5
14	WILLIAMS, Aubrey		2-4	0-0	2-2				3	8	11	1	6	1	0	0	1	26
24	BURNETT, Josh		0-1	0-0	0-0				0	0	0	0	0	0	0	0	0	1
33	JANKOVIC, Kosta		0-0	0-0	0-0				0	0	0	1	0	0	0	0	0	1
Team									2	3	5				1			
Totals			24-64	7-19	14-18				14	26	40	18	69	10	17	0	5	200

FG % 1st Half: 7-27 25.9% 2nd half: 17-37 45.9% Game: 24-64 37.5%
 3FG % 1st Half: 2-6 33.3% 2nd half: 5-13 38.5% Game: 7-19 36.8%
 FT % 1st Half: 5-6 83.3% 2nd half: 9-12 75.0% Game: 14-18 77.8%

Deadball Rebounds 2

LSU 91 • 2-0

#	Player		Total			3-Ptr			Rebounds			PF	TP	A	TO	Blk	Stl	Min
			FG-FGA	FG-FGA	FT-FTA	FG-FGA	FG-FGA	FT-FTA	Off	Def	Tot							
25	SIMMONS, Ben	f	11-17	0-0	0-0				3	6	9	1	22	6	0	2	4	31
03	ROBINSON III, Elbert	c	1-4	0-0	4-4				2	3	5	2	6	0	1	1	0	19
00	SAMPSON, Brandon	g	1-7	0-4	6-6				0	4	4	2	8	2	1	1	1	28
02	BLAKENEY, Antonio	g	4-8	2-4	4-7				0	3	3	1	14	4	1	1	1	30
55	QUARTERMAN, Tim	g	3-4	2-3	1-2				0	1	1	3	9	2	1	1	1	20
05	GRAY, Josh		6-11	2-3	2-2				1	5	6	1	16	6	2	0	3	22
10	SHORTESS, Henry		0-0	0-0	0-0				0	0	0	0	0	0	0	0	0	1
15	PATTERSON, Jalyln		1-3	0-2	0-0				0	0	0	1	2	0	0	0	2	18
20	BRIDGEWATER, Brian		2-3	0-0	0-0				1	1	2	0	4	1	0	1	0	7
21	EPPS, Aaron		4-8	0-1	2-2				2	5	7	3	10	0	1	2	1	18
22	MALONE, Darcy		0-0	0-0	0-0				0	0	0	2	0	0	1	0	0	5
46	EDDLESTONE, Brandon		0-0	0-0	0-0				0	0	0	0	0	0	0	0	0	1
Team									0	0	0							
Totals			33-65	6-17	19-23				9	28	37	16	91	21	8	9	13	200

FG % 1st Half: 17-36 47.2% 2nd half: 16-29 55.2% Game: 33-65 50.8%
 3FG % 1st Half: 2-9 22.2% 2nd half: 4-8 50.0% Game: 6-17 35.3%
 FT % 1st Half: 8-11 72.7% 2nd half: 11-12 91.7% Game: 19-23 82.6%

Deadball Rebounds 1

Officials: Antinio Petty, A.J. Desai, Ken Washington
 Technical fouls: Kennesaw State-None. LSU-None.
 Attendance: 9654

Score by periods	1st	2nd	Total
Kennesaw State	21	48	69
LSU	44	47	91

Points	In Paint	Off T/O	2nd Chance	Fast Break	Bench
KSU	24	12	21	2	8
LSU	52	22	6	14	32

Last FG - KSU 2nd-00:34, LSU 2nd-00:15.
 Largest lead - KSU by 1 1st-18:52, LSU by 29 2nd-11:57.
 KSU led for 00:13. LSU led for 38:49. Game was tied for 00:58.

Score tied - 1 time.
 Lead changed - 2 times.



Kennesaw State vs LSU

11/16/15 8:05 pm at Maravich Center (Baton Rouge, LA)

1st PERIOD Play-by-Play (Page 1)



Time	Score	Margin	HOME/VISITOR	Time	Score	Margin	HOME/VISITOR
19:45			FOUL by JONES, Jordan (P1T1)	12:44			REBOUND (OFF) by EPPS, Aaron
19:41	2-0	H 2	GOOD! LAYUP by SIMMONS, Ben [PNT]	12:41			TURNOVR by EPPS, Aaron
19:10			TURNOVR by BROWN, Yonel	12:39			STEAL by HECTOR, Tracy
19:08			STEAL by SIMMONS, Ben	12:28			MISSED JUMPER by HECTOR, Tracy
19:05			MISSED 3 PTR by QUARTERMAN, Tim	12:28			REBOUND (DEF) by GRAY, Josh
19:05			REBOUND (OFF) by ROBINSON III, Elbert	12:20	16-13	H 3	GOOD! LAYUP by SIMMONS, Ben [PNT]
19:01			MISSED LAYUP by ROBINSON III, Elbert	11:56			MISSED JUMPER by RAY, Kendrick
19:01			REBOUND (DEF) by PRUITT, Nigel	11:56			REBOUND (OFF) by PRUITT, Nigel
18:52	2-3	V 1	GOOD! 3 PTR by BROWN, Yonel	11:54	16-15	H 1	GOOD! LAYUP by PRUITT, Nigel [PNT]
18:52			ASSIST by RAY, Kendrick	11:38	19-15	H 4	GOOD! 3 PTR by BLAKENEY, Antonio
18:39			FOUL by BROWN, Yonel (P1T2)	11:38			ASSIST by GRAY, Josh
18:39	3-3	T 1	GOOD! FT SHOT by BLAKENEY, Antonio	11:23			MISSED 3 PTR by BROWN, Yonel
18:39			MISSED FT SHOT by BLAKENEY, Antonio	11:23			REBOUND (OFF) by WILLIAMS, Aubrey
18:39			REBOUND (DEF) by PRUITT, Nigel	11:18			TIMEOUT MEDIA
18:14			MISSED 3 PTR by RAY, Kendrick	11:18			SUB IN : SAMPSON, Brandon
18:14			REBOUND (DEF) by QUARTERMAN, Tim	11:18			SUB OUT: BLAKENEY, Antonio
18:00	5-3	H 2	GOOD! DUNK by SIMMONS, Ben [PNT]	11:10			TURNOVR by BROWN, Yonel
17:35			MISSED JUMPER by MASTERSON, Nick	11:10			STEAL by EPPS, Aaron
17:35			REBOUND (DEF) by SIMMONS, Ben	11:04	21-15	H 6	GOOD! LAYUP by EPPS, Aaron [PNT]
17:29			FOUL by PRUITT, Nigel (P1T3)	11:04			ASSIST by GRAY, Josh
17:21			MISSED JUMPER by SIMMONS, Ben	11:01			SUB IN : CLARKE, Kyle
17:21			REBOUND (OFF) by ROBINSON III, Elbert	11:01			SUB IN : MORENA, Bernard
17:17	7-3	H 4	GOOD! LAYUP by ROBINSON III, Elbert [PNT]	11:01			SUB OUT: RAY, Kendrick
16:57	7-5	H 2	GOOD! DUNK by RAY, Kendrick [PNT]	11:01			SUB OUT: PRUITT, Nigel
16:47	9-5	H 4	GOOD! LAYUP by SIMMONS, Ben [PNT]	10:58			TURNOVR by MORENA, Bernard
16:47			ASSIST by SAMPSON, Brandon	10:57			STEAL by GRAY, Josh
16:33	9-7	H 2	GOOD! JUMPER by MASTERSON, Nick	10:33			MISSED 3 PTR by SAMPSON, Brandon
16:10	12-7	H 5	GOOD! 3 PTR by BLAKENEY, Antonio	10:33			REBOUND (OFF) by GRAY, Josh
16:10			ASSIST by SIMMONS, Ben	10:25			MISSED JUMPER by GRAY, Josh
15:37			FOUL by BLAKENEY, Antonio (P1T1)	10:25			REBOUND (OFF) by EPPS, Aaron
15:37			TIMEOUT media	10:22	23-15	H 8	GOOD! DUNK by EPPS, Aaron [PNT]
15:37			MISSED FT SHOT by RAY, Kendrick	10:15			TURNOVR by MORENA, Bernard
15:37			REBOUND (OFF) by (DEADBALL)	10:14			STEAL by GRAY, Josh
15:37	12-8	H 4	GOOD! FT SHOT by RAY, Kendrick	10:10			MISSED 3 PTR by PATTERSON, Jalyn
15:37			SUB IN : EPPS, Aaron	10:10			REBOUND (DEF) by (TEAM)
15:37			SUB OUT: ROBINSON III, Elbert	10:07			SUB IN : RAY, Kendrick
15:20			MISSED 3 PTR by SAMPSON, Brandon	10:07			SUB OUT: CLARKE, Kyle
15:20			REBOUND (DEF) by JONES, Jordan	10:07			SUB IN : ROBINSON III, Elbert
15:09	12-11	H 1	GOOD! 3 PTR by BROWN, Yonel	10:07			SUB OUT: SIMMONS, Ben
15:09			ASSIST by PRUITT, Nigel	10:04			TURNOVR by HECTOR, Tracy
14:45			FOUL by RAY, Kendrick (P1T4)	10:03			STEAL by PATTERSON, Jalyn
14:45			MISSED FT SHOT by BLAKENEY, Antonio	10:00	25-15	H 10	GOOD! LAYUP by PATTERSON, Jalyn [PNT]
14:45			REBOUND (OFF) by (DEADBALL)	09:49	25-17	H 8	GOOD! LAYUP by MORENA, Bernard [PNT]
14:45	13-11	H 2	GOOD! FT SHOT by BLAKENEY, Antonio	09:37	27-17	H 10	GOOD! JUMPER by EPPS, Aaron
14:45	14-11	H 3	GOOD! FT SHOT by BLAKENEY, Antonio	09:37			ASSIST by GRAY, Josh
14:45			SUB IN : PATTERSON, Jalyn	09:23			MISSED JUMPER by RAY, Kendrick
14:45			SUB OUT: SAMPSON, Brandon	09:23			REBOUND (DEF) by EPPS, Aaron
14:35			MISSED LAYUP by RAY, Kendrick	09:19			FOUL by MORENA, Bernard (P1T6)
14:35			REBOUND (DEF) by EPPS, Aaron	09:19			SUB IN : MASTERSON, Nick
14:21			MISSED LAYUP by SIMMONS, Ben	09:19			SUB OUT: HECTOR, Tracy
14:21			REBOUND (OFF) by SIMMONS, Ben	09:08			MISSED JUMPER by SAMPSON, Brandon
14:19			MISSED LAYUP by SIMMONS, Ben	09:08			REBOUND (DEF) by MASTERSON, Nick
14:19			REBOUND (DEF) by PRUITT, Nigel	08:59			FOUL by EPPS, Aaron (P2T4)
14:19			FOUL by EPPS, Aaron (P1T2)	08:47			MISSED 3 PTR by MASTERSON, Nick
14:08			MISSED JUMPER by JONES, Jordan	08:47			REBOUND (DEF) by ROBINSON III, Elbert
14:08			BLOCK by EPPS, Aaron	08:30			MISSED 3 PTR by PATTERSON, Jalyn
14:07			REBOUND (OFF) by (TEAM)	08:30			REBOUND (DEF) by WILLIAMS, Aubrey
13:57			FOUL by PATTERSON, Jalyn (P1T3)	08:27			FOUL by ROBINSON III, Elbert (P1T5)
13:57			SUB IN : GRAY, Josh	08:27			SUB IN : BRIDGEWATER, Brian
13:57			SUB OUT: QUARTERMAN, Tim	08:27			SUB OUT: EPPS, Aaron
13:40	14-13	H 1	GOOD! JUMPER by BROWN, Yonel	08:10			MISSED JUMPER by WILLIAMS, Aubrey
13:28			MISSED JUMPER by SIMMONS, Ben	08:10			REBOUND (DEF) by SAMPSON, Brandon
13:28			REBOUND (DEF) by PRUITT, Nigel	07:59			MISSED JUMPER by ROBINSON III, Elbert
13:28			SUB IN : WILLIAMS, Aubrey	07:59			REBOUND (DEF) by (TEAM)
13:28			SUB OUT: JONES, Jordan	07:58			TIMEOUT media
13:07			MISSED 3 PTR by BROWN, Yonel	07:39			MISSED LAYUP by RAY, Kendrick
13:07			REBOUND (DEF) by BLAKENEY, Antonio	07:39			REBOUND (DEF) by ROBINSON III, Elbert
13:00			FOUL by BROWN, Yonel (P2T5)				
13:00			SUB IN : HECTOR, Tracy				
13:00			SUB OUT: MASTERSON, Nick				
12:44			MISSED LAYUP by EPPS, Aaron				



Kennesaw State vs LSU
11/16/15 8:05 pm at Maravich Center (Baton Rouge, LA)
1st PERIOD Play-by-Play (Page 2)



Time	Score	Margin	HOME/VISITOR	Time	Score	Margin	HOME/VISITOR
07:29			MISSED JUMPER by GRAY, Josh	02:27	40-19	H 21	GOOD! FT SHOT by RAY, Kendrick
07:29			REBOUND (OFF) by BRIDGEWATER, Brian	02:27			SUB IN : MASTERSON, Nick
07:26			MISSED JUMPER by BRIDGEWATER, Brian	02:27			SUB OUT: CLARKE, Kyle
07:26			REBOUND (DEF) by MASTERSON, Nick	02:27			SUB IN : MALONE, Darcy
07:18			MISSED JUMPER by BROWN, Yonel	02:27			SUB OUT: ROBINSON III, Elbert
07:18			REBOUND (DEF) by BRIDGEWATER, Brian	02:12			TURNOVR by MALONE, Darcy
07:14	29-17	H 12	GOOD! LAYUP by GRAY, Josh [FB/PNT]	02:11			STEAL by PRUITT, Nigel
07:14			ASSIST by BRIDGEWATER, Brian	01:43			MISSED JUMPER by RAY, Kendrick
06:44			FOUL by GRAY, Josh (P1T6)	01:43			BLOCK by QUARTERMAN, Tim
06:44			SUB IN : PRUITT, Nigel	01:41			REBOUND (DEF) by SAMPSON, Brandon
06:44			SUB OUT: MORENA, Bernard	01:37	42-19	H 23	GOOD! DUNK by SIMMONS, Ben [PNT]
06:44			SUB IN : QUARTERMAN, Tim	01:37			ASSIST by QUARTERMAN, Tim
06:44			SUB IN : SIMMONS, Ben	01:10			TURNOVR by PRUITT, Nigel
06:44			SUB OUT: GRAY, Josh	01:10			TIMEOUT 30sec
06:44			SUB OUT: BRIDGEWATER, Brian	00:53			MISSED 3 PTR by BLAKENEY, Antonio
06:37			MISSED JUMPER by RAY, Kendrick	00:53			REBOUND (DEF) by WILLIAMS, Aubrey
06:37			REBOUND (OFF) by MASTERSON, Nick	00:28			TURNOVR by RAY, Kendrick
06:35			TURNOVR by MASTERSON, Nick	00:27			STEAL by BLAKENEY, Antonio
06:35			STEAL by SAMPSON, Brandon	00:25	44-19	H 25	GOOD! DUNK by SIMMONS, Ben [FB/PNT]
06:35			FOUL by MASTERSON, Nick (P1T7)	00:25			ASSIST by BLAKENEY, Antonio
06:35	30-17	H 13	GOOD! FT SHOT by SAMPSON, Brandon	00:04			FOUL by MALONE, Darcy (P1T8)
06:35	31-17	H 14	GOOD! FT SHOT by SAMPSON, Brandon	00:04	44-20	H 24	GOOD! FT SHOT by RAY, Kendrick
06:10			TURNOVR by BROWN, Yonel	00:04	44-21	H 23	GOOD! FT SHOT by RAY, Kendrick
06:10			FOUL by BROWN, Yonel (P3T8)				
06:10			SUB IN : CLARKE, Kyle				
06:10			SUB OUT: BROWN, Yonel				
05:41			MISSED JUMPER by SAMPSON, Brandon				
05:41			REBOUND (DEF) by CLARKE, Kyle				
05:35			TURNOVR by CLARKE, Kyle				
05:34			STEAL by SIMMONS, Ben				
05:33	33-17	H 16	GOOD! DUNK by SIMMONS, Ben [PNT]				
05:09			SUB IN : HECTOR, Tracy				
05:09			SUB OUT: MASTERSON, Nick				
05:03			TURNOVR by (TEAM)				
04:46			MISSED 3 PTR by SAMPSON, Brandon				
04:46			REBOUND (DEF) by (TEAM)				
04:20			MISSED JUMPER by WILLIAMS, Aubrey				
04:20			BLOCK by SAMPSON, Brandon				
04:17			REBOUND (OFF) by PRUITT, Nigel				
04:13			TURNOVR by PRUITT, Nigel				
04:12			STEAL by PATTERSON, Jalyn				
03:58			FOUL by CLARKE, Kyle (P1T9)				
03:58			TIMEOUT MEDIA				
03:58	34-17	H 17	GOOD! FT SHOT by SAMPSON, Brandon				
03:58	35-17	H 18	GOOD! FT SHOT by SAMPSON, Brandon				
03:58			SUB IN : BLAKENEY, Antonio				
03:58			SUB OUT: PATTERSON, Jalyn				
03:41			MISSED JUMPER by PRUITT, Nigel				
03:41			BLOCK by SIMMONS, Ben				
03:39			REBOUND (DEF) by BLAKENEY, Antonio				
03:37	37-17	H 20	GOOD! DUNK by QUARTERMAN, Tim [FB/PNT]				
03:37			ASSIST by SIMMONS, Ben				
03:20			MISSED JUMPER by CLARKE, Kyle				
03:20			REBOUND (DEF) by SAMPSON, Brandon				
03:15	39-17	H 22	GOOD! DUNK by BLAKENEY, Antonio [FB/PNT]				
03:15			ASSIST by SIMMONS, Ben				
03:13			TIMEOUT 30sec				
02:52			MISSED JUMPER by PRUITT, Nigel				
02:52			BLOCK by ROBINSON III, Elbert				
02:51			REBOUND (OFF) by (TEAM)				
02:48			TURNOVR by CLARKE, Kyle				
02:47			STEAL by QUARTERMAN, Tim				
02:46			FOUL by RAY, Kendrick (P2T10)				
02:46	40-17	H 23	GOOD! FT SHOT by QUARTERMAN, Tim				
02:46			MISSED FT SHOT by QUARTERMAN, Tim				
02:46			REBOUND (DEF) by PRUITT, Nigel				
02:32			MISSED JUMPER by RAY, Kendrick				
02:32			REBOUND (OFF) by CLARKE, Kyle				
02:27			FOUL by SAMPSON, Brandon (P1T7)				
02:27	40-18	H 22	GOOD! FT SHOT by RAY, Kendrick				

	In	Off	2nd	Fast	Bench
1st period-only	Paint	T/O	Chance	Break	
Kennesaw State	6	0	6	0	2
LSU	28	15	4	8	10

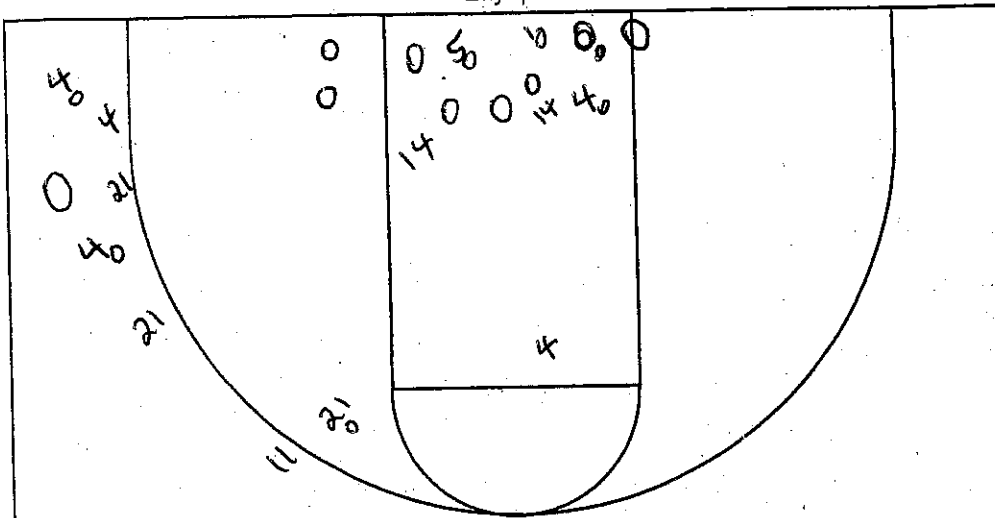
NCAA® BASKETBALL SHOT CHART

First Half

Second Half

(Circle one)

Layups



Points Off TO's

0

Second Chance Pts.

4

Attempted 27
 Made 7
 Percentage 25.9%

Turnovers

1	+	+	+	+	+	+	+	+	+	+	+	+	+	+	+	+	+	+	+	+
---	---	---	---	---	---	---	---	---	---	---	---	---	---	---	---	---	---	---	---	---

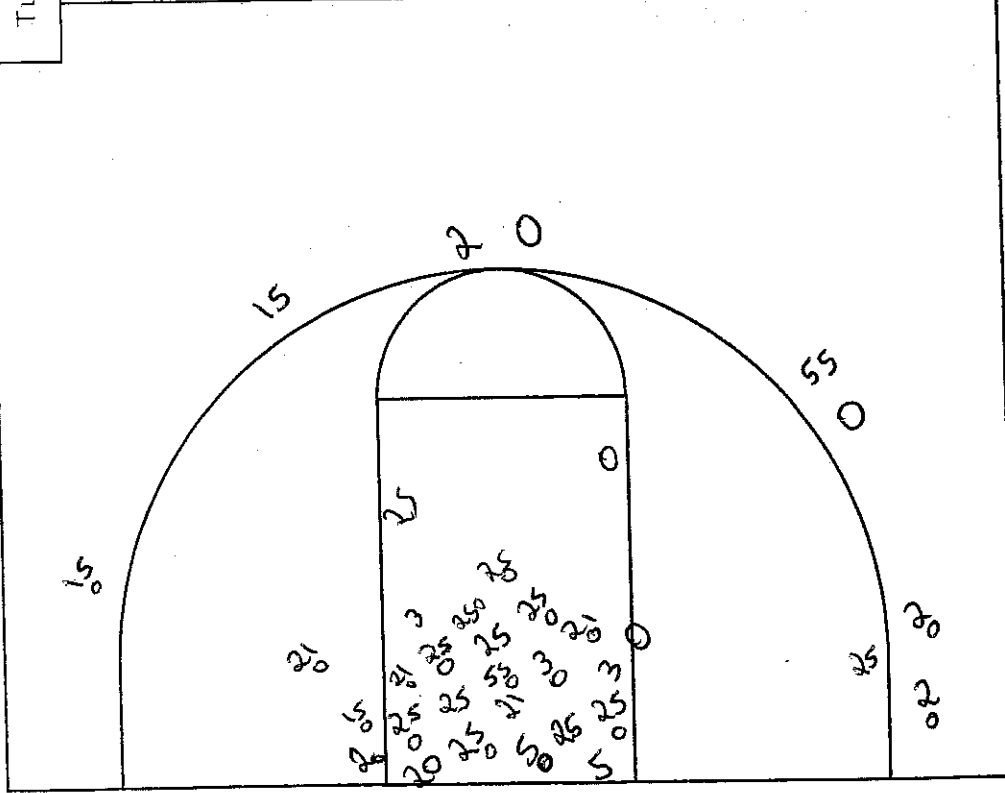
Points Off TO's

15

Second Chance Pts.

4

Attempted 36
 Made 17
 Percentage 47.2%



Layups

Team KSU

Team

Team LSU

Team



Official Basketball Box Score -- Game Totals -- 1st Half
 Kennesaw State vs LSU
 11/16/15 8:05 pm at Maravich Center (Baton Rouge, LA)



Kennesaw State 21

#	Player		Total			Rebounds			PF	TP	A	TO	Blk	Stl	Min
			FG-FGA	3-Ptr FG-FGA	FT-FTA	Off	Def	Tot							
01	PRUITT, Nigel	f	1-3	0-0	0-0	2	5	7	1	2	1	2	0	1	15
02	JONES, Jordan	f	0-1	0-0	0-0	0	1	1	1	0	0	0	0	7	
00	RAY, Kendrick	g	1-9	0-1	5-6	0	0	0	2	7	1	1	0	19	
04	BROWN, Yonel	g	3-6	2-4	0-0	0	0	0	3	8	0	3	0	14	
21	MASTERSON, Nick	g	1-3	0-1	0-0	1	2	3	1	2	0	1	0	14	
03	HECTOR, Tracy		0-1	0-0	0-0	0	0	0	0	0	0	1	0	9	
05	MORENA, Bernard		1-1	0-0	0-0	0	0	0	1	2	0	2	0	4	
11	CLARKE, Kyle		0-1	0-0	0-0	1	1	2	1	0	0	2	0	5	
14	WILLIAMS, Aubrey		0-2	0-0	0-0	1	2	3	0	0	0	0	0	13	
Team						2	3	5				1			
Totals			7-27	2-6	5-6	7	14	21	10	21	2	13	0	2	100

FG % 1st Half: 7-27 25.9%
 3FG % 1st Half: 2-6 33.3%
 FT % 1st Half: 5-6 83.3%

Deadball
Rebounds
1

LSU 44

#	Player		Total			Rebounds			PF	TP	A	TO	Blk	Stl	Min
			FG-FGA	3-Ptr FG-FGA	FT-FTA	Off	Def	Tot							
25	SIMMONS, Ben	f	7-11	0-0	0-0	1	1	2	0	14	3	0	1	2	17
03	ROBINSON III, Elbert	c	1-3	0-0	0-0	2	2	4	1	2	0	0	1	0	12
00	SAMPSON, Brandon	g	0-5	0-3	4-4	0	3	3	1	4	1	0	1	1	16
02	BLAKENEY, Antonio	g	3-4	2-3	3-5	0	2	2	1	11	1	0	0	1	13
55	QUARTERMAN, Tim	g	1-2	0-1	1-2	0	1	1	0	3	1	0	1	1	13
05	GRAY, Josh		1-3	0-0	0-0	1	1	2	1	2	3	0	0	2	7
15	PATTERSON, Jalyn		1-3	0-2	0-0	0	0	0	1	2	0	0	0	2	11
20	BRIDGEWATER, Brian		0-1	0-0	0-0	1	1	2	0	0	1	0	0	2	
21	EPPS, Aaron		3-4	0-0	0-0	2	2	4	2	6	0	1	1	1	7
22	MALONE, Darcy		0-0	0-0	0-0	0	0	0	1	0	0	1	0	2	
Team						0	0	0							
Totals			17-36	2-9	8-11	7	13	20	8	44	10	2	5	10	100

FG % 1st Half: 17-36 47.2%
 3FG % 1st Half: 2-9 22.2%
 FT % 1st Half: 8-11 72.7%

Deadball
Rebounds
1

Officials: Antinio Petty, A.J. Desai, Ken Washington
 Technical fouls: Kennesaw State-None. LSU-None.
 Attendance:

Score by periods	1st	2nd	Total
Kennesaw State	21	0	21
LSU	44	0	44

Points	In Paint	Off T/O	2nd Chance	Fast Break	Bench
KSU	6	0	6	0	2
LSU	28	15	4	8	10

Last FG - KSU 1st-09:49, LSU 1st-00:25.
 Largest lead - KSU by 1 1st-18:52, LSU by 25 1st-00:25.
 KSU led for 00:13. LSU led for 18:49. Game was tied for 00:58.

Score tied - 1 time.
 Lead changed - 2 times.



Kennesaw State vs LSU

11/16/15 8:05 pm at Maravich Center (Baton Rouge, LA)

2nd PERIOD Play-by-Play (Page 1)



Time	Score	Margin	HOME/VISITOR	Time	Score	Margin	HOME/VISITOR
19:43			MISSED 3 PTR by MASTERSON, Nick	13:15			FOUL by QUARTERMAN, Tim (P3T4)
19:43			REBOUND (DEF) by SIMMONS, Ben	13:15			MISSED FT SHOT by RAY, Kendrick
19:36			TURNOVR by ROBINSON III, Elbert	13:15			REBOUND (OFF) by (DEADBALL)
19:36			FOUL by ROBINSON III, Elbert (P2T1)	13:15	62-37	H 25	GOOD! FT SHOT by RAY, Kendrick
19:19			TIMEOUT 30sec	13:15			SUB IN : EPPS, Aaron
19:05	44-24	H 20	GOOD! 3 PTR by MASTERSON, Nick	13:15			SUB OUT: ROBINSON III, Elbert
19:05			ASSIST by BROWN, Yonel	12:54	64-37	H 27	GOOD! LAYUP by SIMMONS, Ben [PNT]
18:55			MISSED JUMPER by SIMMONS, Ben	12:36			MISSED JUMPER by PRUITT, Nigel
18:55			REBOUND (DEF) by JONES, Jordan	12:36			REBOUND (DEF) by GRAY, Josh
18:45	44-26	H 18	GOOD! JUMPER by JONES, Jordan	12:34			FOUL by BROWN, Yonel (P4T5)
18:45			ASSIST by BROWN, Yonel	12:34			SUB IN : WILLIAMS, Aubrey
18:33			TURNOVR by QUARTERMAN, Tim	12:34			SUB OUT: JONES, Jordan
18:26			FOUL by QUARTERMAN, Tim (P1T2)	12:34			SUB IN : BLAKENEY, Antonio
18:13	44-28	H 16	GOOD! LAYUP by RAY, Kendrick [PNT]	12:34			SUB OUT: QUARTERMAN, Tim
18:13			ASSIST by JONES, Jordan	12:21			MISSED LAYUP by GRAY, Josh
18:00			FOUL by MASTERSON, Nick (P2T1)	12:21			REBOUND (DEF) by PRUITT, Nigel
17:52			FOUL by PRUITT, Nigel (P2T2)	12:16			TURNOVR by PRUITT, Nigel
17:52	45-28	H 17	GOOD! FT SHOT by SAMPSON, Brandon	12:15			STEAL by GRAY, Josh
17:52	46-28	H 18	GOOD! FT SHOT by SAMPSON, Brandon	12:04			MISSED 3 PTR by EPPS, Aaron
17:35			MISSED 3 PTR by BROWN, Yonel	12:04			REBOUND (OFF) by SIMMONS, Ben
17:35			REBOUND (OFF) by PRUITT, Nigel	11:59			MISSED LAYUP by SIMMONS, Ben
17:29	46-30	H 16	GOOD! LAYUP by RAY, Kendrick [PNT]	11:59			REBOUND (OFF) by SIMMONS, Ben
17:29			ASSIST by PRUITT, Nigel	11:57	66-37	H 29	GOOD! LAYUP by SIMMONS, Ben [PNT]
17:21	48-30	H 18	GOOD! DUNK by SIMMONS, Ben [PNT]	11:38			MISSED 3 PTR by BROWN, Yonel
17:21			ASSIST by QUARTERMAN, Tim	11:38			REBOUND (OFF) by PRUITT, Nigel
17:03			TURNOVR by JONES, Jordan	11:35	66-39	H 27	GOOD! LAYUP by PRUITT, Nigel [PNT]
17:02			STEAL by SIMMONS, Ben	11:20			MISSED JUMPER by EPPS, Aaron
16:52	51-30	H 21	GOOD! 3 PTR by QUARTERMAN, Tim	11:20			REBOUND (DEF) by WILLIAMS, Aubrey
16:52			ASSIST by SIMMONS, Ben	11:11			MISSED 3 PTR by MASTERSON, Nick
16:21			MISSED 3 PTR by PRUITT, Nigel	11:11			REBOUND (DEF) by GRAY, Josh
16:21			BLOCK by SIMMONS, Ben	11:02	68-39	H 29	GOOD! LAYUP by GRAY, Josh [PNT]
16:20			REBOUND (OFF) by MASTERSON, Nick	10:37			MISSED JUMPER by RAY, Kendrick
16:18			FOUL by QUARTERMAN, Tim (P2T3)	10:37			BLOCK by EPPS, Aaron
16:18	51-31	H 20	GOOD! FT SHOT by PRUITT, Nigel	10:35			REBOUND (OFF) by WILLIAMS, Aubrey
16:18	51-32	H 19	GOOD! FT SHOT by PRUITT, Nigel	10:34			FOUL by EPPS, Aaron (P3T5)
16:18	51-33	H 18	GOOD! FT SHOT by PRUITT, Nigel	10:34			TIMEOUT media
16:07			MISSED 3 PTR by BLAKENEY, Antonio	10:34	68-40	H 28	GOOD! FT SHOT by WILLIAMS, Aubrey
16:07			REBOUND (DEF) by RAY, Kendrick	10:34	68-41	H 27	GOOD! FT SHOT by WILLIAMS, Aubrey
16:00			MISSED DUNK by JONES, Jordan	10:34			SUB IN : MALONE, Darcy
16:00			BLOCK by BLAKENEY, Antonio	10:34			SUB OUT: SIMMONS, Ben
15:59			REBOUND (DEF) by ROBINSON III, Elbert	10:22	70-41	H 29	GOOD! LAYUP by GRAY, Josh [PNT]
15:54	53-33	H 20	GOOD! DUNK by SAMPSON, Brandon [FB/PNT]	09:59	70-43	H 27	GOOD! JUMPER by RAY, Kendrick
15:54			ASSIST by SIMMONS, Ben	09:59			ASSIST by WILLIAMS, Aubrey
15:43			MISSED JUMPER by PRUITT, Nigel	09:46			TURNOVR by GRAY, Josh
15:43			REBOUND (DEF) by SAMPSON, Brandon	09:29	70-46	H 24	GOOD! 3 PTR by RAY, Kendrick
15:36	56-33	H 23	GOOD! 3 PTR by QUARTERMAN, Tim	09:29			ASSIST by MASTERSON, Nick
15:36			ASSIST by BLAKENEY, Antonio	09:15			TURNOVR by BLAKENEY, Antonio
15:08	56-36	H 20	GOOD! 3 PTR by BROWN, Yonel	09:14			STEAL by PRUITT, Nigel
14:47			FOUL by PRUITT, Nigel (P3T3)	09:10			MISSED LAYUP by BROWN, Yonel
14:47			TIMEOUT MEDIA	09:10			REBOUND (OFF) by PRUITT, Nigel
14:47	57-36	H 21	GOOD! FT SHOT by ROBINSON III, Elbert	09:06	70-48	H 22	GOOD! TIP-IN by PRUITT, Nigel [PNT]
14:47	58-36	H 22	GOOD! FT SHOT by ROBINSON III, Elbert	08:53			TURNOVR by GRAY, Josh
14:47			SUB IN : GRAY, Josh	08:52			STEAL by WILLIAMS, Aubrey
14:47			SUB IN : PATTERSON, Jalyn	08:42			MISSED 3 PTR by PRUITT, Nigel
14:47			SUB OUT: SAMPSON, Brandon	08:42			REBOUND (DEF) by BLAKENEY, Antonio
14:47			SUB OUT: BLAKENEY, Antonio	08:32	72-48	H 24	GOOD! DUNK by EPPS, Aaron [PNT]
14:28			MISSED JUMPER by PRUITT, Nigel	08:32			ASSIST by BLAKENEY, Antonio
14:28			REBOUND (DEF) by GRAY, Josh	08:03	72-50	H 22	GOOD! JUMPER by PRUITT, Nigel
14:20			FOUL by JONES, Jordan (P2T4)	07:47	75-50	H 25	GOOD! 3 PTR by GRAY, Josh
14:20	59-36	H 23	GOOD! FT SHOT by ROBINSON III, Elbert	07:47			ASSIST by BLAKENEY, Antonio
14:20	60-36	H 24	GOOD! FT SHOT by ROBINSON III, Elbert	07:38			FOUL by MALONE, Darcy (P2T6)
13:56			TURNOVR by BROWN, Yonel	07:38			TIMEOUT MEDIA
13:55			STEAL by SIMMONS, Ben	07:38	75-51	H 24	GOOD! FT SHOT by RAY, Kendrick
13:54	62-36	H 26	GOOD! DUNK by SIMMONS, Ben [FB/PNT]	07:38	75-52	H 23	GOOD! FT SHOT by RAY, Kendrick
13:54			ASSIST by GRAY, Josh	07:38			SUB IN : MORENA, Bernard
13:36			MISSED JUMPER by JONES, Jordan	07:38			SUB IN : HECTOR, Tracy
13:36			REBOUND (DEF) by SIMMONS, Ben	07:38			SUB OUT: PRUITT, Nigel
13:21			MISSED JUMPER by ROBINSON III, Elbert	07:38			SUB OUT: MASTERSON, Nick
13:21			REBOUND (DEF) by PRUITT, Nigel	07:38			SUB IN : SAMPSON, Brandon
				07:38			SUB IN : SIMMONS, Ben
				07:38			SUB OUT: MALONE, Darcy
				07:38			SUB OUT: PATTERSON, Jalyn



Kennesaw State vs LSU
11/16/15 8:05 pm at Maravich Center (Baton Rouge, LA)
2nd PERIOD Play-by-Play (Page 2)



Time	Score	Margin	HOME/VISITOR	Time	Score	Margin	HOME/VISITOR
07:29			REBOUND (DEF) by WILLIAMS, Aubrey	00:37			MISSED JUMPER by BURNETT, Josh
07:22	75-55	H 20	GOOD! 3 PTR by RAY, Kendrick	00:37			REBOUND (OFF) by WILLIAMS, Aubrey
07:22			ASSIST by BROWN, Yonel	00:34	89-69	H 20	GOOD! JUMPER by WILLIAMS, Aubrey [PNT]
07:00	78-55	H 23	GOOD! 3 PTR by GRAY, Josh	00:15	91-69	H 22	GOOD! DUNK by BRIDGEWATER, Brian [PNT]
07:00			ASSIST by SAMPSON, Brandon	00:15			ASSIST by GRAY, Josh
06:43			MISSED 3 PTR by RAY, Kendrick	00:05			MISSED 3 PTR by BROWN, Yonel
06:43			REBOUND (OFF) by MORENA, Bernard	00:05			REBOUND (DEF) by EPPS, Aaron
06:30	78-57	H 21	GOOD! JUMPER by WILLIAMS, Aubrey [PNT]				
06:12	80-57	H 23	GOOD! LAYUP by GRAY, Josh [PNT]				
05:46			MISSED JUMPER by BROWN, Yonel				
05:46			REBOUND (DEF) by SIMMONS, Ben				
05:36			MISSED 3 PTR by GRAY, Josh				
05:36			REBOUND (DEF) by WILLIAMS, Aubrey				
05:30			FOUL by SAMPSON, Brandon (P2T7)				
05:30			MISSED FT SHOT by RAY, Kendrick				
05:30			REBOUND (DEF) by SIMMONS, Ben				
05:15			FOUL by MORENA, Bernard (P2T6)				
05:15	81-57	H 24	GOOD! FT SHOT by GRAY, Josh				
05:15	82-57	H 25	GOOD! FT SHOT by GRAY, Josh				
05:15			SUB IN : BRIDGEWATER, Brian				
05:15			SUB OUT: EPPS, Aaron				
04:57			MISSED JUMPER by BROWN, Yonel				
04:57			BLOCK by BRIDGEWATER, Brian				
04:55			REBOUND (DEF) by GRAY, Josh				
04:53	84-57	H 27	GOOD! LAYUP by BLAKENEY, Antonio [FB/PNT]				
04:53			ASSIST by GRAY, Josh				
04:23			MISSED JUMPER by BROWN, Yonel				
04:23			REBOUND (DEF) by SIMMONS, Ben				
04:19			FOUL by WILLIAMS, Aubrey (P1T7)				
04:19	85-57	H 28	GOOD! FT SHOT by BLAKENEY, Antonio				
04:19			MISSED FT SHOT by BLAKENEY, Antonio				
04:19			REBOUND (DEF) by WILLIAMS, Aubrey				
04:19			SUB IN : PRUITT, Nigel				
04:19			SUB OUT: MORENA, Bernard				
04:04			TURNOVR by RAY, Kendrick				
03:44			MISSED LAYUP by GRAY, Josh				
03:44			REBOUND (DEF) by RAY, Kendrick				
03:35	85-59	H 26	GOOD! LAYUP by PRUITT, Nigel [PNT]				
03:35			ASSIST by RAY, Kendrick				
03:22	87-59	H 28	GOOD! DUNK by BRIDGEWATER, Brian [PNT]				
03:22			ASSIST by SIMMONS, Ben				
03:15			FOUL by SIMMONS, Ben (P1T8)				
03:15			TIMEOUT MEDIA				
03:15	87-60	H 27	GOOD! FT SHOT by RAY, Kendrick				
03:15			MISSED FT SHOT by RAY, Kendrick				
03:15			REBOUND (DEF) by EPPS, Aaron				
03:15			SUB IN : MASTERSON, Nick				
03:15			SUB OUT: HECTOR, Tracy				
03:15			SUB IN : EPPS, Aaron				
03:15			SUB OUT: SIMMONS, Ben				
02:57			MISSED JUMPER by BLAKENEY, Antonio				
02:57			REBOUND (DEF) by WILLIAMS, Aubrey				
02:47	87-63	H 24	GOOD! 3 PTR by MASTERSON, Nick				
02:37			TURNOVR by SAMPSON, Brandon				
02:36			STEAL by PRUITT, Nigel				
02:35	87-65	H 22	GOOD! LAYUP by PRUITT, Nigel [FB/PNT]				
02:07			MISSED 3 PTR by SAMPSON, Brandon				
02:07			REBOUND (DEF) by MASTERSON, Nick				
01:57	87-67	H 20	GOOD! LAYUP by RAY, Kendrick [PNT]				
01:43			MISSED JUMPER by BLAKENEY, Antonio				
01:43			REBOUND (DEF) by WILLIAMS, Aubrey				
01:24			MISSED JUMPER by MASTERSON, Nick				
01:24			REBOUND (DEF) by EPPS, Aaron				
01:22	88-67	H 21	GOOD! FT SHOT by EPPS, Aaron				
01:22			TIMEOUT 30sec				
01:22	89-67	H 22	GOOD! FT SHOT by EPPS, Aaron				
01:12			SUB IN : JANKOVIC, Kosta				
01:12			SUB IN : BURNETT, Josh				
01:12			SUB OUT: PRUITT, Nigel				
01:12			SUB OUT: MASTERSON, Nick				
01:12			SUB IN : EDDLESTONE, Brandon				
01:12			SUB IN : SHORTLESS, Henry				

	In Paint	Off T/O	2nd Chance	Fast Break	Bench
2nd period-only					
Kennesaw State	18	12	15	2	6
LSU	24	7	2	6	22

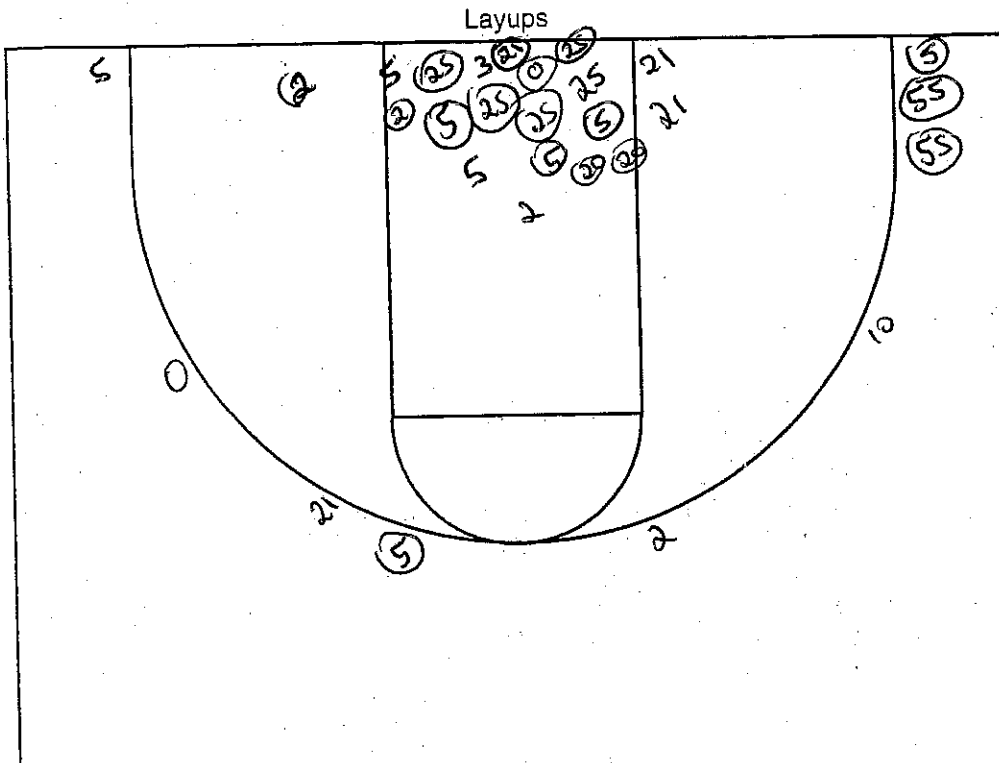
NCAA® BASKETBALL SHOT CHART

First Half

Second Half

(Circle one)

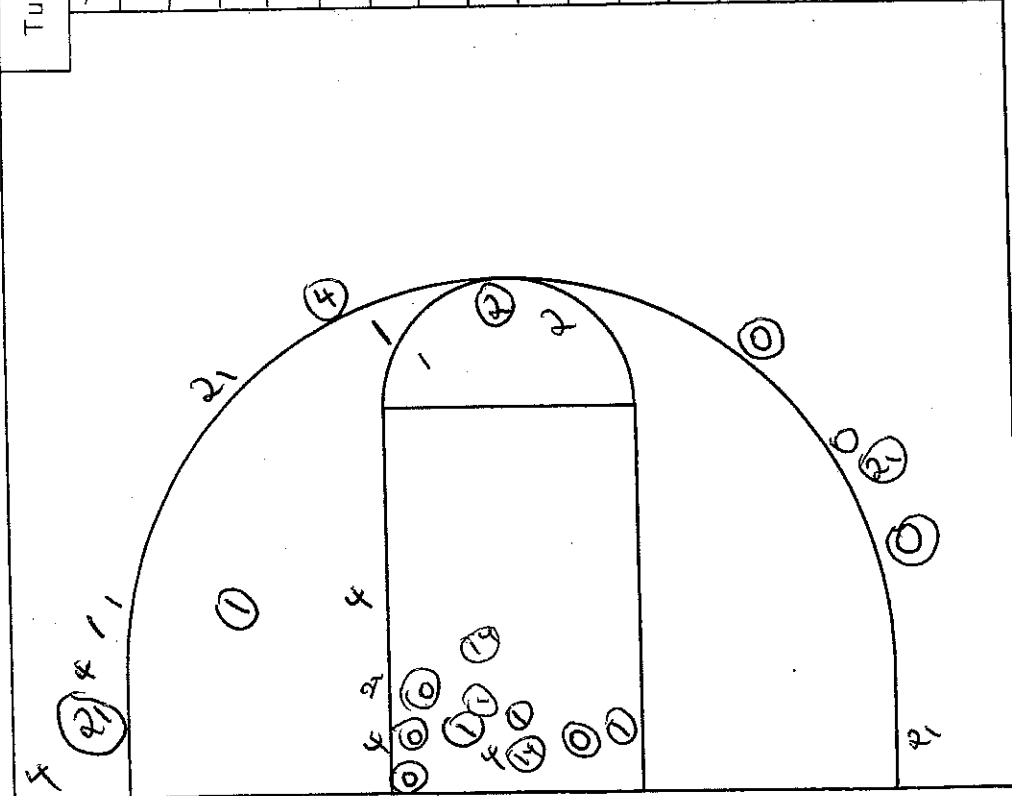
Team LSU



Turnovers

1	+	+	+	+	+	6	7	8	9	10	11	12	13	14	15	16	17	18	19
---	---	---	---	---	---	---	---	---	---	----	----	----	----	----	----	----	----	----	----

Team KSU





Official Basketball Box Score -- 2nd Half-Only
Kennesaw State vs LSU
 11/16/15 8:05 pm at Maravich Center (Baton Rouge, LA)



Kennesaw State

#	Player	f	Total		3-Ptr	Rebounds			PF	TP	A	TO	Blk	Stl	Min
			FG-FGA	FG-FGA	FT-FTA	Off	Def	Tot							
01	PRUITT, Nigel	f	5-10	0-2	3-3	3	2	5	2	13	1	1	0	2	16
02	JONES, Jordan	f	1-3	0-0	0-0	0	1	1	1	2	1	1	0	0	8
00	RAY, Kendrick	g	6-8	2-3	4-7	0	2	2	0	18	1	1	0	0	20
04	BROWN, Yonel	g	1-8	1-4	0-0	0	0	0	1	3	3	1	0	0	20
21	MASTERSON, Nick	g	2-5	2-4	0-0	1	1	2	1	6	1	0	0	0	14
03	HECTOR, Tracy		0-0	0-0	0-0	0	0	0	0	0	0	0	0	0	4
05	MORENA, Bernard		0-0	0-0	0-0	1	0	1	1	0	0	0	0	0	3
11	CLARKE, Kyle		0-0	0-0	0-0	0	0	0	0	0	0	0	0	0	0
14	WILLIAMS, Aubrey		2-2	0-0	2-2	2	6	8	1	6	1	0	0	1	13
24	BURNETT, Josh		0-1	0-0	0-0	0	0	0	0	0	0	0	0	0	1
33	JANKOVIC, Kosta		0-0	0-0	0-0	0	0	0	1	0	0	0	0	0	1
Team						0	0	0							
Totals			17-37	5-13	9-12	7	12	19	8	48	8	4	0	3	100

FG % 1st Half: 7-27 25.9% 2nd half: 17-37 45.9%
 3FG % 1st Half: 2-6 33.3% 2nd half: 5-13 38.5%
 FT % 1st Half: 5-6 83.3% 2nd half: 9-12 75.0%

LSU

#	Player	f	Total		3-Ptr	Rebounds			PF	TP	A	TO	Blk	Stl	Min
			FG-FGA	FG-FGA	FT-FTA	Off	Def	Tot							
25	SIMMONS, Ben	f	4-6	0-0	0-0	2	5	7	1	8	3	0	1	2	14
03	ROBINSON III, Elbert	c	0-1	0-0	4-4	0	1	1	1	4	0	1	0	0	7
00	SAMPSON, Brandon	g	1-2	0-1	2-2	0	1	1	1	4	1	1	0	0	12
02	BLAKENEY, Antonio	g	1-4	0-1	1-2	0	1	1	0	3	3	1	1	0	17
55	QUARTERMAN, Tim	g	2-2	2-2	0-0	0	0	0	3	6	1	1	0	0	7
05	GRAY, Josh		5-8	2-3	2-2	0	4	4	0	14	3	2	0	1	15
10	SHORTESS, Henry		0-0	0-0	0-0	0	0	0	0	0	0	0	0	0	1
15	PATTERSON, Jalyn		0-0	0-0	0-0	0	0	0	0	0	0	0	0	0	7
20	BRIDGEWATER, Brian		2-2	0-0	0-0	0	0	0	0	4	0	0	1	0	5
21	EPPS, Aaron		1-4	0-1	2-2	0	3	3	1	4	0	0	1	0	11
22	MALONE, Darcy		0-0	0-0	0-0	0	0	0	1	0	0	0	0	0	3
45	EDDLESTONE, Brandon		0-0	0-0	0-0	0	0	0	0	0	0	0	0	0	1
Team						0	0	0							
Totals			16-29	4-8	11-12	2	15	17	8	47	11	6	4	3	100

FG % 1st Half: 17-36 47.2% 2nd half: 16-29 55.2%
 3FG % 1st Half: 2-9 22.2% 2nd half: 4-8 50.0%
 FT % 1st Half: 8-11 72.7% 2nd half: 11-12 91.7%

Officials: Antinio Petty, A.J. Desai, Ken Washington
 Technical fouls: Kennesaw State-None. LSU-None.
 Attendance: 9654

Score by periods	1st	2nd	Total
Kennesaw State	21	48	69
LSU	44	47	91

	In	Off	2nd	Fast	Bench
Points	Paint	T/O	Chance	Break	
KSU	18	12	15	2	6
LSU	24	7	2	6	22

Last FG - KSU 2nd-00:34, LSU 2nd-00:15.
 Largest lead - KSU by 1 1st-18:52, LSU by 29 2nd-11:57.
 KSU led for 00:13. LSU led for 38:49. Game was tied for 00:58.

Score tied - 0 times.
 Lead changed - 0 times.