



©2012 HBI



GAME 8

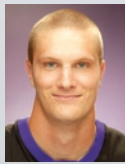
WEBER STATE VS. OREGON

CBI FIRST ROUND - MARCH 16, 2011 - 7 PM PT
MATT ARENA - EUGENE, ORE.

PROBABLE LINEUPS

WEBER STATE	POS	OREGON	POS
Kyle Bullinger	F	Garrett Sim	G
Darin Mahoney	F	Malcolm Armstead	G
Trevor Morris	C	E.J. Singler	F
Scott Bamforth	G	Tyrone Nared	F
Lindsey Hughey	G	Joevan Catron	F

PLAYERS TO WATCH



KYLE BULLINGER Jr. • F • Weber State

Has played and started in 92 straight games...named first-team All-Big Sky Conference for the 2010-11 season... twice named Big Sky Player of the

Week...netted a career-high 26 vs. Eastern Washington in the quarterfinals of the 2011 Big Sky postseason tournament.



JOEVAN CATRON Sr. • F • Oregon

Second-team Pac-10 All-Conference... has led the team in scoring 17 times this season (20 times in his career)...also led the team in rebounding 16 times this

season (42 times in his career)...has a team-best 15.0 ppg average...has scored in double figures in 22 of the 31 games he played in this season...of his nine career 20-point games, eight have come this season.

TONIGHT'S OTHER GAMES

Miami (Ohio) @ Rhode Island • 7 p.m. ET
Thomas M. Ryan Center • Kingston, R.I.

St. Bonaventure @ UCF • 8 p.m. ET on HDNet
UCF Arena • Orlando, Fla.

Duquesne @ Montana • 9 p.m. ET
Dahlberg Arena • Missoula, Mont.

WEBER STATE WILDCATS

18-13 overall, 11-5 Big Sky Conference (3rd)

NO	NAME	POS	HT	WT	CL	HOMETOWN (PREVIOUS SCHOOL)	G	MIN	PTS	REB	AST
1	Damian Lillard	G	6-2	185	Jr.	Oakland, Calif. (Oakland)	9	31.4	19.7	4.2	2.6
2	B.J. Porter	F/G	6-3	190	So.	Layton, Utah (Univ. of Portland)	18	9.9	2.7	0.7	0.4
3	Kyle Bullinger	F/G	6-6	215	Jr.	Mountain View, Wyo. (Mountain View)	31	28.7	11.1	6.2	2.0
4	Scott Bamforth	G/F	6-2	190	So.	Albuquerque, N.M. (Western Nebraska C.C.)	30	28.3	12.0	2.1	2.9
5	Jordan Richardson	G	6-1	180	Fr.	Lewisville, Texas (Merrill F. West)	31	16.8	3.3	1.4	1.5
13	Frank Otis	F/G	6-6	230	Jr.	Oakland, Calif. (Southern Methodist Univ.)	0	0.0	0.0	0.0	0.0
15	Lindsey Hughey	G	6-3	200	Sr.	Grand Prairie, Texas (Seminole C.C.)	31	31.1	12.5	5.2	2.6
25	Byron Fulton	F	6-7	220	R-Fr.	Phoenix, Ariz. (St. Mary's)	31	18.8	7.1	3.5	0.6
30	Darin Mahoney	F	6-8	225	Jr.	Heber City, Utah (Wasatch)	30	25.1	4.0	5.1	0.8
40	Blake Davis	F	6-5	210	R-Fr.	Phoenix, Ariz. (St. Mary's)	14	3.4	0.2	0.4	0.3
44	Kyle Tresnak	C	6-10	250	Fr.	Scottsdale, Ariz. (Scottsdale Horizon)	31	11.7	3.6	2.2	0.2
55	Trevor Morris	C	6-9	240	Sr.	Nampa, Idaho (Nampa)	31	25.6	10.0	4.3	0.7

Head Coach – Randy Rahe

Associate Head Coach – Eric Duft

Assistant Coaches – Phil Beckner, Tim Gardner

ABOUT WEBER STATE – The Wildcats posted an 18-13 record and an 11-5 ledger in the Big Sky Conference...senior guard Lindsey Hughey, an honorable mention all-league selection this season, leads Weber State with a 12.5 ppg average, while sophomore swingman Scott Bamforth is netting 12.0 points an outing...junior forward Kyle Bullinger hauls down a team-best 6.2 rebounds per game while scoring at an 11.1 ppg clip... WSU head coach Randy Rahe has produced a winning team in each of his five seasons as head coach...a three-time Big Sky Conference Coach of the Year, his teams have won 10 or more regular season conference games in each of his five seasons and have earned postseason tournament berths in four of his five seasons.

HOW THEY GOT HERE – Weber State fell to fellow CBI entrant Montana in the semifinals of the Big Sky Conference...the Wildcats finished in third place during the regular-season.

OREGON DUCKS

16-17 overall, 7-11 in Pacific-10 Conference (T-7th)

NO	NAME	POS	HT	WT	CL	HOMETOWN (PREVIOUS SCHOOL)	G	MIN	PTS	REB	AST
1	Nicholas Fearn	G	6-1	188	Jr.	Seattle, Wash. (Seattle Prep)	25	4.6	0.2	1.0	0.1
2	Matt Losli	G	6-4	185	So.	Tualatin, Ore. (Tualatin)	12	2.2	0.3	0.5	0.2
3	Garrett Sim	G	6-1	181	Jr.	Portland, Ore. (Sunset)	33	25.9	7.9	2.4	2.0
4	Nicholas Lucenti	G	6-3	212	Fr.	Los Angeles, Calif. (Loyola)	4	1.8	0.3	0.0	0.0
10	Johnathan Loyd	G	5-8	160	Fr.	Las Vegas, Nev. (Bishop Gorman)	33	19.1	4.7	1.9	2.1
11	Malcolm Armstead	G	6-0	195	Jr.	Florence, Ala. (Chipola Coll.)	32	27.5	8.5	2.9	4.4
12	Martin Seiferth	C	6-10	223	Fr.	Berlin, Germany (VFB Hermsdorf)	11	4.5	0.7	0.8	0.2
15	John Elorriaga	G	6-2	205	Jr.	Portland, Ore. (Jesuit)	0	0.0	0.0	0.0	0.0
22	Teondre Williams	G	6-4	218	Jr.	Atlanta, Ga. (Meadowcreek)	31	16.2	4.9	2.0	0.6
23	Jeremy Jacob	F	6-8	226	Jr.	Baton Rouge, La. (Chipola Coll.)	17	14.6	6.2	3.5	0.5
25	E.J. Singler	F	6-6	210	So.	Medford, Ore. (South Medford)	33	30.1	11.4	5.7	1.6
31	Tyrone Nared	F	6-8	210	Jr.	Woonsocket, R.I. (Monroe Coll.)	33	19.2	5.2	3.8	0.3
34	Joevan Catron	F	6-6	245	R-Sr.	Phoenix, Ill. (Thornton Township)	31	27.3	15.0	6.2	1.5
55	Jay-R Strowbridge	G	5-10	180	Sr.	Huntsville, Ala. (Jacksonville State Univ.)	33	25.3	9.6	2.4	0.9

Head Coach – Dana Altman

Assistant Coaches – Kevin McKenna, Brian Fish, Tony Stubblefield

ABOUT OREGON – The Ducks are making their first postseason appearance since the 2007-08 season...this year saw Oregon set a school record for steals, registering 270 on the year to pass the previous mark of 263 held by the 2002-03 UO squad...Oregon enters the CBI presented by Zebra Pen with a 16-17 mark...senior forward Joevan Catron was named second-team Pac-10 all-conference and was also named to the NABC Division I All-District 20 second-team...he is the first Oregon player to receive all-league recognition since the 2007-08 season...sophomore forward E.J. Singler was named to the 2011 Pac-10 Conference all-tournament team, where he averaged 18.7 points and 5.0 rebounds in three games and a semifinal appearance.

HOW THEY GOT HERE – Under first-year head coach Dana Altman, Oregon advanced to the semifinals of the Pac-10 Tournament with wins over Arizona State and UCLA.

VISIT CBI2011.COM FOR COMPLETE SCORES, STATS & HIGHLIGHTS OF ALL GAMES THROUGHOUT THE EVENT

2011 CBI PRESENTED BY ZEBRA PEN TOURNAMENT BRACKET



ABOUT THE CBI presented by ZEBRA PEN

The College Basketball Invitational presented by Zebra Pen provides a meaningful opportunity for teams that deserve a postseason experience. Sixteen teams compete in this four-year-old postseason event, hosted at on-campus arenas throughout the country.

The event features eight first-round games, four quarterfinal round games, a semifinal round, and then the Championship Series. The CBI is a single-elimination tournament up until the Championship Series, with all games played at campus sites. The Championship Series is a best-of-three series.

The goal of the brackets is to create a competitive balance within each bracket and to minimize missed class time. The final process takes place after the NCAA Tournament field is announced.

The 16-team field consists of teams not selected for the NCAA Tournament. Teams are invited based upon performance during their conference and non-conference schedules, as well as how well the team is playing at the end of the regular season.

Zebra Pen Corp., leaders in the writing instrument industry for more than 110 years, is the maker of a full line of writing instruments including ball point, gel and roller ball pens, mechanical pencils, and highlighters. A top manufacturer of writing instruments in the world, Zebra Pen's Z-Grip line is currently the number one selling ball point pen in America. Zebra Pen creates innovative, user-friendly, high-value, quality writing products that can be found in major retail locations nationwide.

ZEBRA[®]
Make a statement...in writing™

2011 TOURNAMENT NOTES

Fourth Annual CBI presented by Zebra Pen

The fourth annual CBI presented by Zebra Pen tips off on March 15 with four Opening Round games, with four additional Opening Round games being played on March 16. The Quarterfinals commence on Monday, March 21, followed by Semifinal Round action on Wednesday, March 23.

The unique quality of the CBI presented by Zebra Pen is it's best-of-three Championship Series, which will be held March 28, March 30, and April 1. One team will host two games should a third game be necessary.

Breeding Success

Six participants in the 2010 CBI presented by Zebra Pen earned berths in the 2011 NCAA Tournament: Akron, Boston University, Indiana State, Morehead State, Princeton, and VCU. Below is a look at how other postseason tournaments fed into this year's NCAA Tournament:

CBI - 6 of 16 (38%)
NIT - 7 of 32 (22%)
CIT - 1 of 16 (6%)

Believe it...or Not

Games in the CBI presented by Zebra Pen have been the most competitive of the postseason (average margin of victory):

	NCAA	NIT	CBI
2010	10.6 points	8.7 points	9.0 points
2009	12.7 points	9.0 points	6.6 points
2008	13.8 points	12.7 points	7.1 points

Did You Know...

Tulsa (2008) and Oregon State (2009) won the first two CBIs. Both series went the distance as Tulsa won Games 1 and 3 against Bradley in 2008 and Oregon State did the same in 2009 against UTEP. Last year, VCU became the first team to need only two games to win the CBI crown.

Fantastic

213,587 fans attended games at the first three CBIs.

Conference Call

The 2011 CBI presented by Zebra Pen includes teams from 10 different conferences. They are: Atlantic 10 (3), Big Sky (2), Colonial Athletic (2), Missouri Valley (2), Western Athletic (2), Conference USA, Mid-American, Ohio Valley, Pac-10, and Southern.

Welcome Back

Duquesne and Hofstra both participated in the 2010 CBI presented by Zebra Pen, while Boise State was a member of the 2009 field and Miami (Ohio) played in the inaugural 2008 event.

What They're Saying...

"The crowd was alive... some sort of living, breathing entity with ear shattering, rock concert, airplane noise. It began to grow as it formed at 3 p.m. to await the chance to get into the building. It flowed down the concourse, filling up the seats like lava flowing out of a volcano. It rocked and rolled and roared."

~ From the *El Paso Times* on Game 2 of the 2009 CBI Championship Series at UTEP

HDNet TELEVISION SCHEDULE (all times Eastern)

March 15

James Madison at Davidson – 7 p.m.
Austin Peay at Boise State – 9 p.m.

March 16

St. Bonaventure at UCF – 8 p.m.
Weber State at Oregon – 10 p.m.

March 21

Quarterfinal – TBD
Quarterfinal – TBD

March 23

Semifinal – TBD
Semifinal – TBD

March 28

Championship Series, Game 1 – TBD

March 30

Championship Series, Game 2 – TBD

April 1 (if necessary)

Championship Series, Game 3 – TBD