

2010 COLLEGE BASKETBALL INVITATIONAL

FIRST ROUND

MARCH 16 & 17

QUARTERFINALS

MARCH 22



SEMIFINALS

MARCH 24

CHAMPIONSHIP SERIES

MARCH 29 & 31, APRIL 2



GAME 8

BOSTON UNIVERSITY VS. OREGON STATE CBI FIRST ROUND - MARCH 17, 2010 - 7 PM PT GILL COLISEUM - CORVALLIS, ORE.

PROBABLE LINEUPS

BOSTON UNIV.	POS	OREGON STATE	POS
Tyler Morris	G	Jared Cunningham	G
Carlos Strong	G	Calvin Haynes	G
John Holland	G/F	Seth Tarver	G/F
Jake O'Brien	F	Angus Brandt	F/C
Jeff Pelage	C	Roeland Schaftenaar	F/C

PLAYERS TO WATCH

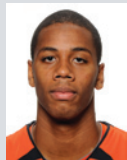


JOHN HOLLAND

Jr. • G/F • Boston University

Named to the first-team All-America East squad for the second time in as many seasons...he is the first Terrier since 2005 to be named to the all-conference

first-team twice during his career...he is also the first Terrier to ever lead the America East in scoring with a 19.0 ppg scoring average...also averages 6.1 rebounds a game...reached the 1,000-point milestone against Northeastern earlier this season...currently ranks seventh in the BU record book with 1,493 points.



SETH TARVER

Sr. • G/F • Oregon State

Named the Pac-10 Conference's Defensive Player of the Year while earning honorable mention all-conference status...was instrumental in Oregon

State allowing just 61.1 ppg overall and 60.4 ppg in league games...led the Pac-10 with a 2.3 steals per game average and the Beavers in rebounding at 4.7 rpg...his 70 steals this season are the sixth most in school history and his 177 career steals are seventh all-time at OSU...offensively, he is second on the team with a 10.3 ppg scoring average and tops at 2.3 assists a game.

TONIGHT'S OTHER GAMES

Duquesne vs. Princeton • 7 p.m. ET
Jadwin Gym • Princeton, N.J.

Green Bay vs. Akron • 7 p.m. ET
James A. Rhodes Arena • Akron, Ohio

Charleston vs. Eastern Kentucky • 7 p.m. ET
Alumni Coliseum • Richmond, Ky.

IUPUI vs. Hofstra • 7 p.m. ET
Mack Sports Complex • Hempstead, N.Y.

Colorado State vs. Morehead State • 9 p.m. ET
Ellis T. Johnson Arena • Morehead, Ky.

BOSTON UNIVERSITY TERRIERS

19-13 overall, 11-5 America East Conference (4th)

NO	NAME	POS	HT	WT	CL	HOMETOWN (PREVIOUS SCHOOL)	G	MIN	PTS	REB	AST
1	Darryl Partin	G	6-6	190	Jr.	Seattle, Wash. (La Salle)	0	0.0	0.0	0.0	0.0
2	Matt Griffin	G	5-10	180	Jr.	Narbeth, Pa. (Rider)	0	0.0	0.0	0.0	0.0
3	Michael Schulte	G	6-0	185	Sr.	Townsend, Mass. (North Middlesex Region)	14	1.3	0.2	0.4	0.1
13	Corey Lowe	G	6-2	200	Sr.	Newton, Mass. (Newton North)	31	33.6	15.1	4.5	4.1
14	Patrick Hazel	F	6-6	220	Jr.	Jamaica, N.Y. (Marquette)	0	0.0	0.0	0.0	0.0
15	Valdas Sirutis	F	6-7	215	Sr.	Gargzdai, Lithuania (Tidewater)	29	15.7	1.9	2.3	0.6
20	Tunde Agboola	G	6-4	197	Sr.	Springfield, Mass. (Methuen)	15	4.1	0.7	0.4	0.1
21	Jake O'Brien	F	6-8	220	So.	Weymouth, Mass. (Boston College)	32	32.9	13.5	6.4	0.5
22	Carlos Strong	G	6-3	215	Sr.	Portland, Maine (Deering)	32	30.0	10.1	4.7	1.6
23	John Holland	G/F	6-5	205	Jr.	Bronx, N.Y. (St. Benedict's Prep (N.J.))	32	34.2	19.0	6.1	1.0
24	Tyler Morris	G	6-2	190	Sr.	Indianapolis, Ind. (Lawrence North)	24	32.3	9.5	2.8	3.6
25	Brendan Sullivan	F	6-7	205	Sr.	Darien, Conn. (Darien)	20	9.4	0.6	1.3	0.1
32	Jeff Pelage	C	6-9	240	So.	Pompano Beach Fla. (Pine Crest)	32	17.2	3.0	5.3	0.2
34	Sherrod Smith	G/F	6-4	185	Sr.	Milwaukee, Wis. (Whitefish Bay)	26	5.1	0.2	0.8	0.2
43	Chris Kurz	F	6-8	210	So.	Philadelphia, Pa. (Arizona State)	0	0.0	0.0	0.0	0.0

HEAD COACH - Patrick Chambers (first season), 19-13 (.594)

ASSOCIATE HEAD COACH - Orlando Vandross

ASSISTANT COACHES - Brian Daly, Ross Condon

ABOUT BOSTON UNIVERSITY - Boston University is 19-13 and looking for its 12th 20-win season and first since the 2004-05 campaign...BU is led by two-time first-team All-America East honoree John Holland...Holland is America East's leading scorer at 19.0 ppg and ranks seventh all-time at Boston University...senior Corey Lowe also has surpassed the 1,000-point plateau and ranks right behind Holland with a 15.1 ppg scoring average...he also leads the Terriers with 127 assists...for his efforts Lowe was named a second-team all-conference performer...sophomore Jake O'Brien nets 13.5 ppg and leads the team with his 6.4 rpg average.

HOW THEY GOT HERE - Boston University advanced to the title game of the America East tournament, dropping an 83-70 decision to Vermont...the Terriers finished fourth in the AEC with an 11-5 mark...BU is making its first postseason appearance since the 2005 NIT.

OREGON STATE BEAVERS

14-17 overall, 8-10 Pacific-10 Conference (T-6th)

NO	NAME	POS	HT	WT	CL	HOMETOWN (PREVIOUS SCHOOL)	G	MIN	PTS	REB	AST
0	Kevin McShane	F	6-9	215	So.	Portland, Ore. (Clackamas)	19	9.7	1.2	1.3	0.4
1	Jared Cunningham	G	6-3	170	Fr.	Oakland, Calif. (San Leandro)	31	18.8	5.7	2.0	0.9
2	Calvin Hampton	F	6-10	250	Sr.	Fort Washington, Md. (New Hampton)	13	5.7	0.8	1.2	0.2
3	Chris Richard	G	6-3	190	So.	Portland, Ore. (Richmond)	6	2.5	0.3	0.2	0.2
4	David Sturmer	F	6-8	205	Fr.	Philomath, Ore. (Philomath)	5	2.6	0.4	1.6	0.2
5	Josh Tarver	G	6-3	190	Sr.	Portland, Ore. (Jesuit)	31	20.6	3.1	1.9	1.6
10	Roeland Schaftenaar	F/C	6-11	240	Sr.	Utrecht, Netherlands (Gerrit Rietveld)	31	25.7	9.1	4.0	1.8
11	Joe Burton	F/C	6-7	270	Fr.	Hemet, Calif. (West Valley)	31	15.7	4.8	4.5	0.9
12	Angus Brandt	F/C	6-10	215	Fr.	Sydney, Australia (Lake Forest)	25	8.8	1.0	1.0	0.6
13	Rhys Murphy	G	6-8	195	Fr.	Sydney, Australia (Lee)	0	0.0	0.0	0.0	0.0
15	Seth Tarver	G/F	6-5	210	Sr.	Portland, Ore. (Jesuit)	31	30.8	10.3	4.7	2.3
22	Calvin Haynes	G	6-2	185	Jr.	Reseda, Calif. (South Kent)	31	31.0	12.4	2.3	1.7
24	Omari Johnson	F	6-9	215	Jr.	Los Angeles, Calif. (Dorsey)	31	15.7	4.7	2.7	0.6
30	Daniel Deane	F	6-8	245	Jr.	Park City, Utah (Utah)	27	13.9	3.3	2.9	0.3
34	Lathen Wallace	G	6-3	200	Jr.	Portland, Ore. (Jefferson)	30	13.8	4.9	1.4	0.4
55	Roberto Nelson	G	6-4	190	Fr.	Santa Barbara, Calif. (Santa Barbara)	0	0.0	0.0	0.0	0.0

HEAD COACH - Craig Robinson (fourth season), 62-63 (.496)

ASSISTANT COACHES - Doug Stewart, Nate Pomeday, David Grace

ABOUT OREGON STATE - Under the guidance of second-year head coach Craig Robinson, Oregon State has won 32 games over the last two seasons, the most wins over any two-year period since winning 36 games during the 1989-90 and 1990-91 seasons...junior guard Calvin Haynes leads the Beavers in scoring, netting 12.4 points per game...for his season-long efforts Haynes was named to the All-Pac-10 second-team...senior swingman Seth Tarver, the Pac-10 Defensive Player of the Year and honorable mention all-conference selection, averages 10.3 ppg and led the league with a 2.3 steals per game average...senior Roeland Schaftenaar (9.1 ppg), the 2009 CBI MVP, garnered honorable mention all-conference acclaim.

HOW THEY GOT HERE - Oregon State is the defending CBI champion, having beaten UTEP in the best-of-three Championship Series, 2-1, including the rubber game of the series, an 81-73 decision in front of a packed house at UTEP...the Beavers tied for fifth in the Pac-10 and fell in their tournament opener.

FOLLOW THE CBI ONLINE

VISIT CBI2010.COM FOR COMPLETE SCORES, STATS & HIGHLIGHTS OF ALL GAMES THROUGHOUT THE EVENT

ABOUT THE CBI

The College Basketball Invitational (CBI) provides a meaningful opportunity for teams that deserve a postseason experience. Sixteen teams compete in this three-year-old postseason event, hosted at on-campus arenas throughout the country.

The CBI is a single-elimination tournament up until the Championship Series, with all games played at campus sites. The Championship Series is a best-of-three series.

The event features eight first-round games, four quarterfinal round games, a semifinal round, and then the Championship Series.

The goal of the brackets is to create a competitive balance within each bracket and to minimize missed class time. The final process takes place after the NCAA Tournament field is announced.

The 16-team field consists of teams not selected for the NCAA Tournament. Teams are invited based upon performance during their conference and non-conference schedules, as well as how well the team is playing at the end of the regular season.

The College Basketball Invitational is produced by The Gazelle Group in Princeton, N.J. The Gazelle Group is a sports marketing firm specializing in event production and management, client representation, and sponsorship consulting. For more information, visit gazellegroup.com.

2010 CBI TOURNAMENT NOTES

Third Annual CBI – The third annual College Basketball Invitational tips off on March 16 with a pair of Opening Round games, with six additional Opening Round games being played on March 17. The Quarterfinals commence on Monday, March 22, followed by Semifinal Round action on Wednesday, March 24.

The unique quality of the CBI is it's best-of-three Championship Round, which will be held March 29, March 31, and April 2. The highest remaining seed would host two games should a third game be necessary. In each of the first two CBIs, the Championship Round went the full three games.

Believe It...Or Not – The CBI had the most competitive games during the 2009 postseason:

- 6.6 – average margin of victory in CBI
- 9.2 – average margin of victory in NIT
- 13.3 – average margin of victory in NCAA

Did You Know – Tulsa (2008) and Oregon State (2009) won the first two College Basketball Invationals. Both series went the distance as Tulsa won Games 1 and 3 against Bradley in 2008 and Oregon State did the same in 2009 against UTEP.

Fantastic – 172,474 fans attended games at the first two CBI Tournaments. In both years, the final two games of the Championship Series were played before sellout crowds of 9,014 at Bradley (2008), 8,455 at Tulsa (2008), and 12,000 at UTEP (2009).

Conference Call – The 2010 CBI includes teams from 12 different conferences. Three conferences - Atlantic 10 (3), Colonial Athletic (2), and Ohio Valley (2) - received multiple bids. The other nine conferences represented

are: America East, Horizon, Ivy, Mid-American, Missouri Valley, Mountain West, Pac-10, Southern, and Summit.

Manning Up – If you want defense, you have come to the right place. The 2010 CBI will feature no less than five players who were named their league's Defensive Player of the Year. Charleston's Jeremy Simmons (co-Defensive Player) (Southern), Duquesne's Damian Saunders (Atlantic 10), Morehead State's Kenneth Faried (Ohio Valley), Oregon State's Seth Tarver (Pac-10), and VCU's Larry Sanders (CAA) all garnered the award.

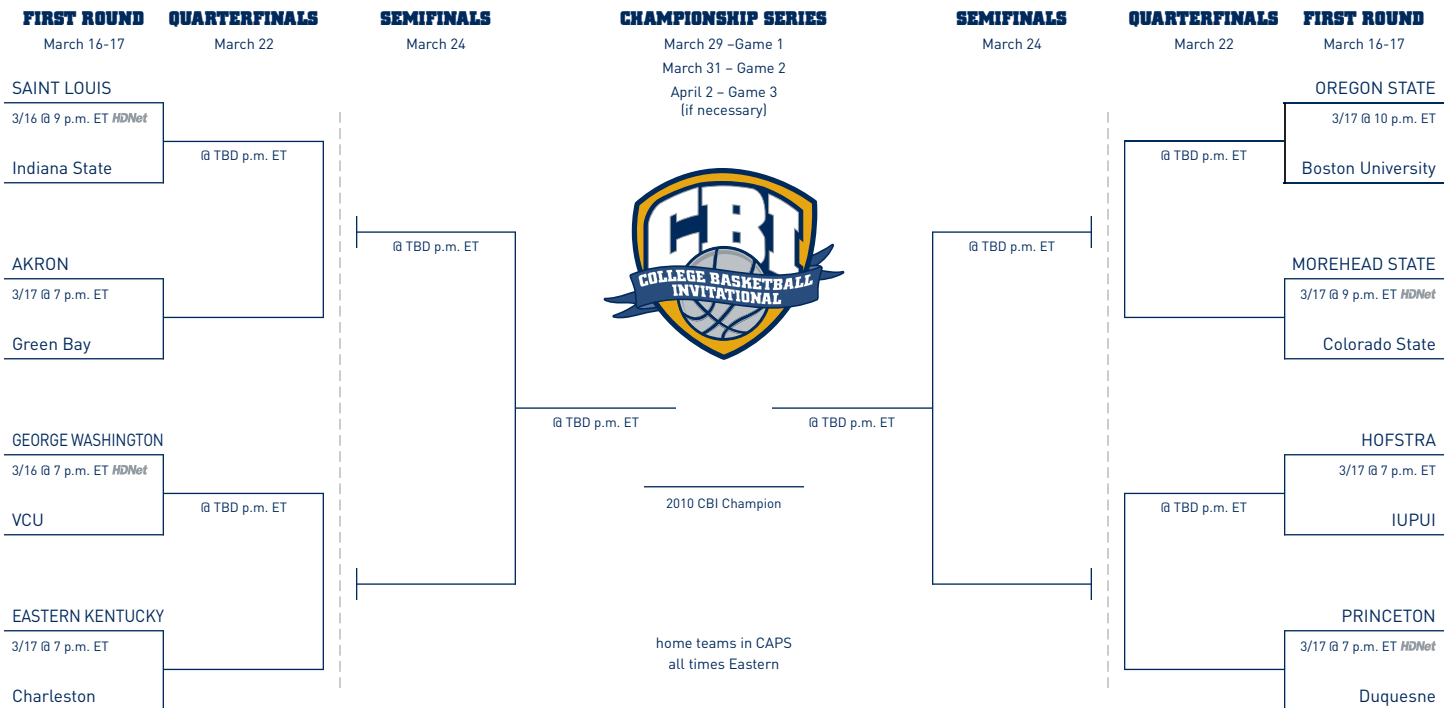
In addition to being named Defensive Player of the Year, Faried was named the Ohio Valley Conference's Player of the Year. Hofstra's Charles Jenkins enters the CBI as the Player of the Year in the Colonial Athletic Association. Alex Young of IUPUI was the Sixth Man of the Year in the Summit League.

In all, 25 players in this year's CBI earned all-conference honors, including 11 first-team selections.

Welcome Back – Three teams that participated in the 2009 CBI return in 2010. Green Bay dropped its opener a year ago, falling to Vermont, 76-72; Charleston was victorious in its first game with a 93-91 win at Troy before falling at Richmond, 74-72; and Oregon State won the 2009 CBI with wins over Houston (49-45), Vermont (71-70, OT), and Stanford (65-62, OT) to advance to the Championship Series. There, the Beavers won Games 1 and 3 to earn the CBI title.

Win, Baby, Win – Nine teams in this year's CBI field won at least 20 games in 2009-10. Akron and IUPUI lead the way with 24 victories apiece. They are joined by Morehead State (23) VCU (22), Charleston (21), Green Bay (21), Eastern Kentucky (20), Princeton (20), and Saint Louis (20).

2010 CBI TOURNAMENT BRACKET



WHERE TO WATCH THE CBI

Up to eleven games will be televised live nationally on HDNet (schedule at right).

Don't have HDNet? Call your cable or satellite provider and demand HDNet today.

www.hd.net/subscribe

HDNet TELEVISION SCHEDULE

(all times Eastern)

March 16

VCU vs. George Washington – 7 p.m.
Indiana State vs. Saint Louis – 9 p.m.

March 17

Duquesne vs. Princeton – 7 p.m.
Colorado State vs. Morehead State – 9 p.m.

March 22

Quarterfinal – TBD
Quarterfinal – TBD

March 24

Semifinal – TBD
Semifinal – TBD

March 29

Championship Series, Game 1 – TBD

March 31

Championship Series, Game 2 – TBD

April 2 (if necessary)

Championship Series, Game 3 – TBD